

IN CYTOTOX



CVDE

CRYSTAL VIOLET DYE ELUTION



APPLICATIONS

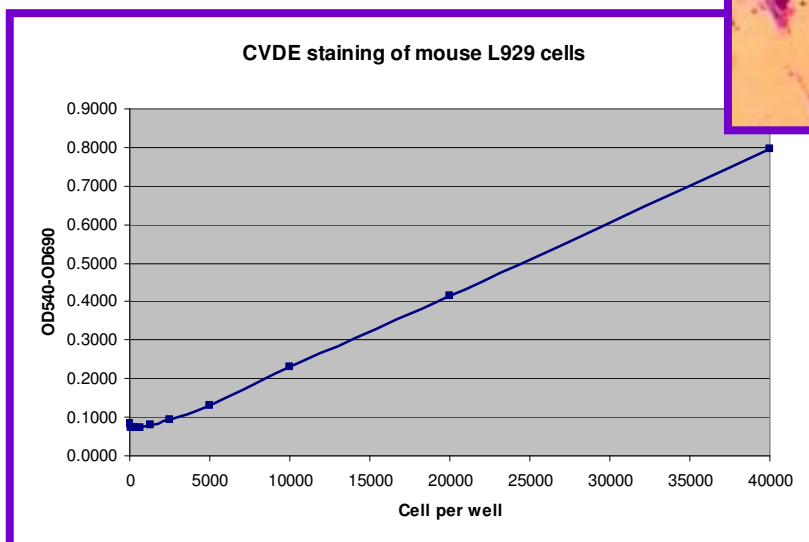
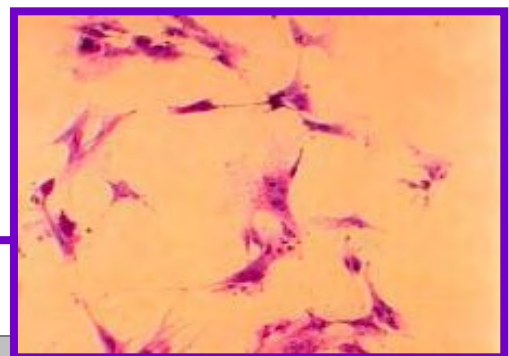
Colorimetric assay for the quantification of nuclear DNA and cell number in response to pharmaceutical, chemical and environmental compounds and nutrients.

PRINCIPLE

Crystal Violet is a dye that accumulates in the cell nucleus. The fixed dye, measured photometrically after solubilization, correlates with the nuclear DNA content and thus with cell number.

BIOLOGICAL PARAMETERS EVALUATION

- IC₅₀ (Inhibitory Concentration 50%)
- Cell proliferation



TECHNICAL SPECIFICATIONS

- Absorbance:** - 540 nm
- Approximate assay time:** - 1 hour
- Available kit configurations:**
- Reagents only
 - Reagents and 96-well microplates, sterile reagent reservoirs
- CVDE Kit content:**
- Wash solution
 - Labeling solution
 - Solubilization solution
 - Instruction manual

CVDE KIT SIZES AND REFERENCE NUMBERS

REFERENCE NO.	NUMBER OF TESTS
AKCV96.300	300
AKCV96.1200	1200

**Kits with plasticware (microplates and reservoirs) are also available.
Individual reagents and other kit sizes available upon request.**

Version 1.5 01/2007