

IN CYTOTOX

NR - SRB



APPLICATIONS

Combined colorimetric assays for the quantification of the lysosomal activity and total protein synthesis rate of cells in response to pharmaceutical, chemical and environmental compounds, and nutrients.

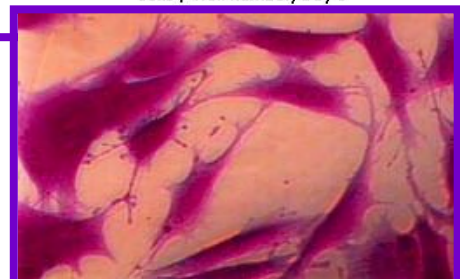
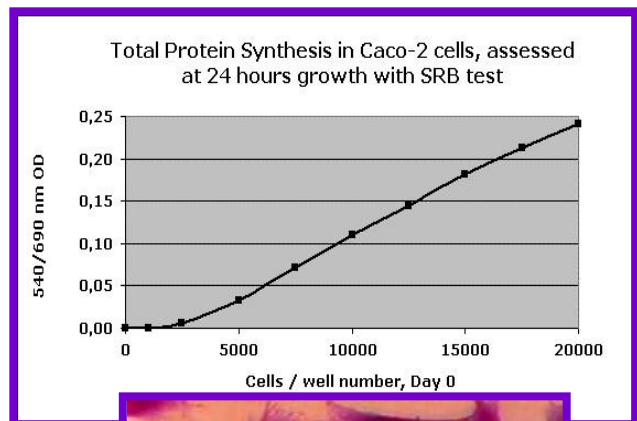
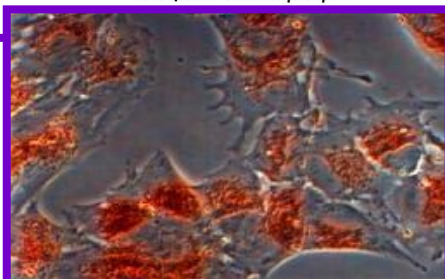
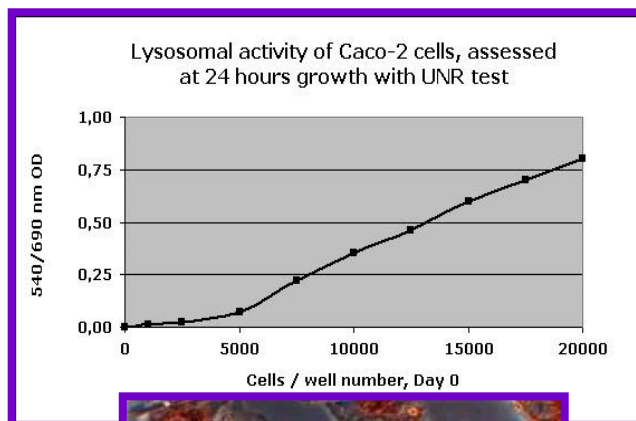
PRINCIPLE

This kit allows to measure sequentially two cytotoxicity parameters in one single cell culture: Lysosomal integrity and activity (**NR: Neutral Red**) and total protein synthesis rate (**SRB: Sulforhodamine B**).

Neutral Red, a marker for membrane integrity and lysosomal activity, is taken up and stored in the lysosomes of viable cells. The fixed SRB dye, measured photometrically after solubilization, correlates with total protein synthesis rate and therefore with cell proliferation.

BIOLOGICAL PARAMETERS EVALUATION

- IC₅₀ (Inhibitory Concentration 50%)
- Lysosomal activity
- Total protein synthesis
- Cell proliferation



TECHNICAL SPECIFICATIONS

- Absorbance:**
- NR: 540 nm
 - SRB: 540 nm
(Recommended reference filter: 690 nm)
- Approximate assay time (total):**
- 5 hr 40 min plus time to dry the plate
- Available kit configurations:**
- Reagents only
 - Reagents and 96-well microplates, sterile reagent reservoirs
- NR - SRB Kit content:**
- Wash solutions
 - Labeling solutions
 - Fixing solutions
 - Rinsing solution
 - Solubilization solutions
 - Instruction manual

NR - SRB KIT SIZES AND REFERENCE NUMBERS

REFERENCE NO.	NUMBER OF TESTS
AKRSR96.300	2 x 300
AKRSR96.1200	2 x 1200

**Kits with plasticware (microplates and reservoirs) are also available.
Individual reagents and other kit sizes available upon request.**

Version 1.5 01/2007

Distributed by:

ANIARA

Manufactured By: Xenometrix AG