

IN CYTOTOX

SRB - CVDE



APPLICATIONS

Combined colorimetric assays for the quantification of the total protein synthesis rate and for the quantification of nuclear DNA and cell number in response to pharmaceutical, chemical and environmental compounds, and nutrients.

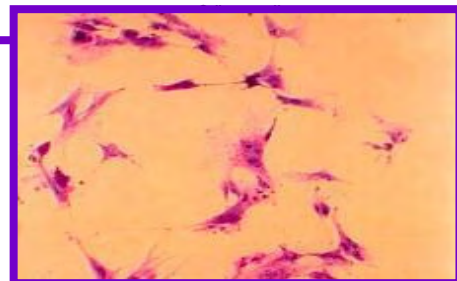
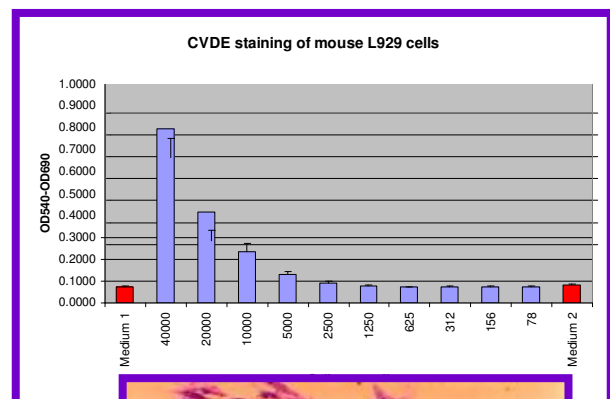
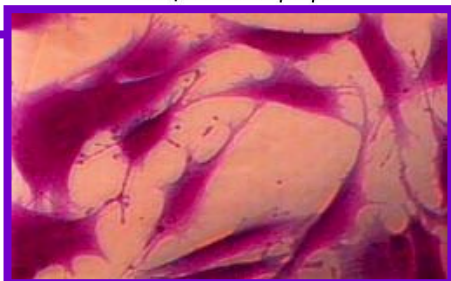
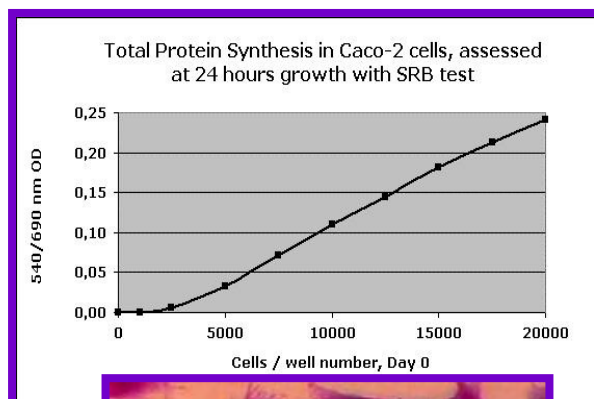
PRINCIPLE

This kit allows to measure sequentially two cytotoxicity parameters in one single cell culture: Total protein synthesis rate (**SRB: Sulforhodamine B**) and nuclear DNA and cell number (**CVDE: Crystal Violet Dye Elution**).

The fixed SRB dye, measured photometrically after solubilization, correlates with total protein synthesis rate and cell number. Crystal Violet is a dye that accumulates in the cell nucleus. The fixed dye, measured photometrically after solubilization, correlates with the nuclear DNA content and thus with cell number.

BIOLOGICAL PARAMETERS EVALUATION

- IC_{50} (Inhibitory Concentration 50%)
- Total protein synthesis
- Cell proliferation
- Nuclear DNA



TECHNICAL SPECIFICATIONS

- Absorbance:**
- SRB: 540 nm
(Recommended reference filter: 690 nm)
 - CVDE: 540 nm
- Approximate assay time (total):**
- 3 hr + plate drying time
- Available kit configurations:**
- Reagents only
 - Reagents and 96-well microplates, sterile reagent reservoirs
- SRB - CVDE Kit content:**
- Wash solution
 - Fixing solution
 - Labeling solutions
 - Rinsing solution
 - Solubilization solutions
 - Instruction manual

SRB - CVDE KIT SIZES AND REFERENCE NUMBERS

| REFERENCE NO. | NUMBER OF TESTS |
|---------------|-----------------|
| AKSRCV96.300 | 2 x 300 |
| AKSRCV96.1200 | 2 x 1200 |

Kits with plasticware (microplates and reservoirs) are also available.
Individual reagents and other kit sizes available upon request.

Version 1.5 01/2007

Distributed by:

ANIARA

Manufactured By: Xenometrix AG