

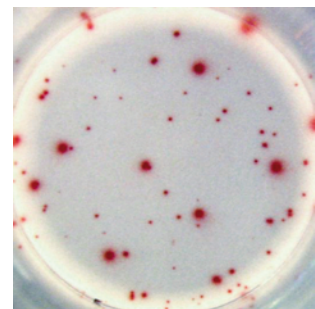
B cell ELISPOT



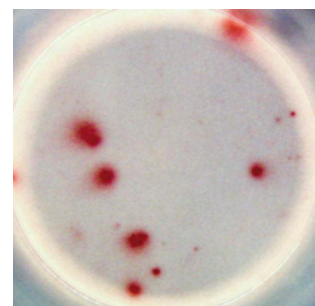
B cell responses are conventionally determined by quantifying antibody titers in serum or plasma. Antibody production can be maintained for years by plasma cells in bone marrow and memory B cells that can differentiate into plasma cells after re-exposure to antigen.

The B cell ELISPOT allows the detection and enumeration of antibody secreting B cells in peripheral blood cell preparations. Before B cells can be detected in the assay, quiescent memory B cells are expanded *in vitro* by polyclonal or antigenic stimulation. The Ig-secreting B cells are subsequently detected using isotype specific secondary antibodies. The assay provides a method to determine total and antigen-specific B cells.

The technique is based on the same solid-phase immunoenzymatic principle as the T cell ELISPOT: the plate is coated with antibodies specific for human immunoglobulins (total number of antibody secreting cells) or antigen (antigen-specific antibody secreting cells). Spot forming B cells are subsequently detected by labeled antibodies directed to different classes of immunoglobulins.



**Total number of
IgG secreting B cells**
 4×10^3 cells / well



**Tetanus-specific
IgG secreting B cells**
 2×10^5 cells / well

Form AU04
06-2010



U-CyTech products

	T cell ELISPOT kits species				ELISA kits species			
	human	monkey	rat	mouse	human	monkey	rat	mouse
IFN- γ	√	√	√	√	√	√	√	√
IL-1 β	√	√			√	√		
IL-2	√	√			√	√		
IL-4	√	√	√	√	√	√	√	√
IL-5	√	√		√	√	√		√
IL-6	√	√			√	√		
IL-8					√	√		
IL-10	√	√		√	√	√		√
IL-12p40+p70		√				√		
IL-12p70	√				√			
IL-13	√	√			√	√		
IL-17	√	√			√	√		
IL-23					√	√		
TNF- α	√	√	√	√	√	√	√	√
GM-CSF	√	√			√	√		
G-CSF					√			
Granzyme B	√				√			
Perforin	√	√			√	√		

	B cell ELISPOT kits species	
	human	monkey
IgG	√	√
IgM		
IgE		
IgA		

	FluoroSpot kits species	
	human	monkey
IFN- γ / TNF- α	√	√
IFN- γ / IL-2	√	√
IFN- γ / IL-5	√	√
IFN- γ / IL-13	√	√
IFN- γ / IL-17	√	√

T and B cell ELISPOT, FluoroSpot and ELISA

T cell ELISPOT kits are available in 2-plate and 5-plate format, B cell ELISPOT kits in 5-plate format, FluoroSpot kits in 2-plate format and ELISA kits in 5-plate format.

Also available

Chimpanzee ELISPOT, FluoroSpot and ELISA kits. Matched antibody pairs for cytokine ELISPOT and ELISA.

Guaranteed stability

We guarantee that our antibody pairs will remain stable for minimal one year from date of purchase, if stored properly.

More information & ordering

Prices, catalog numbers, cytokine specificity and other information can be found on our website www.aniara.com
Orders can be placed online, by e-mail, telephone, fax or regular mail.



Form AU04
06-2010