

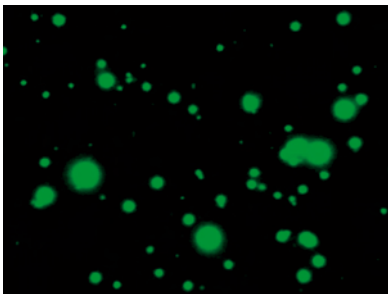
FluoroSpot



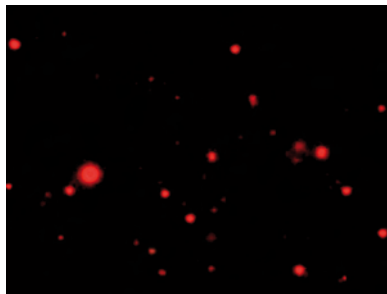
One of the most sensitive techniques in cytokine research is the cytokine ELISPOT assay. This assay permits the measurement of low frequency T cells in tissue and blood cell preparations on basis of the secretion of a characteristic cytokine. Since multiple cytokines provide better discrimination between different T cell subpopulations, an assay that detects two or more different cytokines released by the same cell would be of high interest to the scientific community.

The dual-color FluoroSpot assay is a modification of the ELISPOT assay and developed for the detection of two cytokines released by a single T cell. The assay is based on the use of antibodies labeled with different fluorophores enabling the detection of T cells producing two pre-selected cytokines. The FluoroSpot assay is particularly useful for the analysis of T cell subpopulations with distinct cytokine profiles.

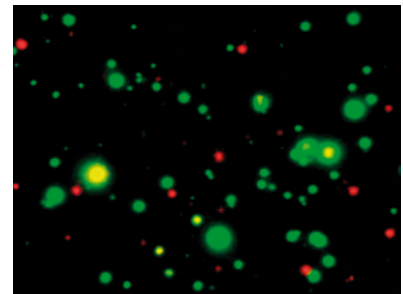
Human IFN- γ / IL-13 FluoroSpot: 1×10^4 human PBMC stimulated with PMA/ionomycin



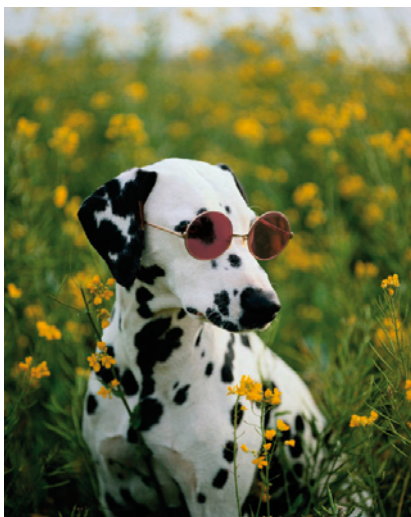
IFN- γ producing cells (green spots)



IL-13 producing cells (red spots)



Overlay: yellow spots are cells secreting both IFN- γ and IL-13



Available
human & monkey
IFN- γ / TNF- α
IFN- γ / IL-2
IFN- γ / IL-5
IFN- γ / IL-13
IFN- γ / IL-17



U-CyTech products

	T cell ELISPOT kits species				ELISA kits species			
	human	monkey	rat	mouse	human	monkey	rat	mouse
IFN- γ	√	√	√	√	√	√	√	√
IL-1 β	√	√			√	√		
IL-2	√	√			√	√		
IL-4	√	√	√	√	√	√	√	√
IL-5	√	√		√	√	√		√
IL-6	√	√			√	√		
IL-8					√	√		
IL-10	√	√		√	√	√		√
IL-12p40+p70		√				√		
IL-12p70	√				√			
IL-13	√	√			√	√		
IL-17	√	√			√	√		
IL-23					√	√		
TNF- α	√	√	√	√	√	√	√	√
GM-CSF	√	√			√	√		
G-CSF					√			
Granzyme B	√				√			
Perforin	√	√			√	√		

	B cell ELISPOT kits species	
	human	monkey
IgG	√	√
IgM		
IgE		
IgA		

	FluoroSpot kits species	
	human	monkey
IFN- γ / TNF- α	√	√
IFN- γ / IL-2	√	√
IFN- γ / IL-5	√	√
IFN- γ / IL-13	√	√
IFN- γ / IL-17	√	√

T and B cell ELISPOT, FluoroSpot and ELISA

T cell ELISPOT kits are available in 2-plate and 5-plate format, B cell ELISPOT kits in 5-plate format, FluoroSpot kits in 2-plate format and ELISA kits in 5-plate format.

Also available

Chimpanzee ELISPOT, FluoroSpot and ELISA kits. Matched antibody pairs for cytokine ELISPOT and ELISA.

Guaranteed stability

We guarantee that our antibody pairs will remain stable for minimal one year from date of purchase, if stored properly.

More information & ordering

Prices, catalog numbers, cytokine specificity and other information can be found on our website: www.aniara.com

Orders can be placed online, by e-mail, telephone, fax or regular mail.



Form AU05
06-2010