



ZYMUTEST CRP-HS*

Ref. ARK010A

*High sensitive detection of Cross Reactive Protein (HS-CRP), by ELISA technique

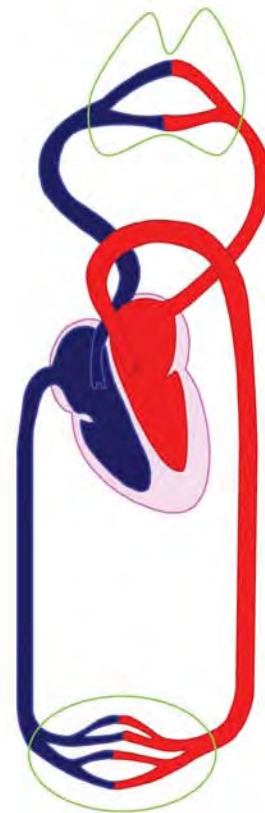


Applications

- ZYMUTEST CRP-HS allows measuring concentrations, within the range considered as normal respectively to an inflammatory episode ($< 10 \mu\text{g/mL}$). Within this range, CRP concentration is a predictive marker for cardiovascular diseases and their recurrence, in apparently healthy individuals, but out of any inflammation stimulus (for confirmation of elevated concentrations, it is recommended to perform a new testing 4/6 weeks later).
- Identification of individuals with increased cardiovascular risk (CRP concentration $>3 \mu\text{g/mL}$).
- Estimation of recurrence risk in patients following a cardiovascular event.
- Any application where Highly Sensitive CRP concentrations ($< 10 \mu\text{g/mL}$) must be measure on plasma or serum.

- High sensitivity measurement of CRP on plasma or serum
- Standardised with the International Standard (NIBSC)
- One step, rapid test
- High sensitivity
- High specificity
- Detection threshold $< 0.5 \text{ ng/mL}$

High sensitivity CRP measurement by ELISA provides a novel and predictive marker for cardiovascular diseases and for their recurrence.



The CRP concentration, although within the normal range respectively to the inflammation profile ($< 10 \mu\text{g/mL}$), can predict cardiovascular diseases and their recurrence.