



ANIARA

Manufactured By: Xenometrix AG

Instructions for use

In Cytotox - GLU

1 - Parameter Cytotoxicity Kit

Glucose Consumption GLU - Metabolic Activity

Art. No. AKGLU96.400
Art. No. AKGLU96.410
Art. No. AKGLU96.1200
Art. No. AKGLU96.1210

For research use only

Version 2.3 03/2011



7768 Service Center Drive • West Chester OH 45069

Phone: 513.770.1991

Toll Free: 866.783.3797

Fax: 513.573.9241

Email: info@aniara.com

www.aniara.com

Table of contents

| | | |
|--|-------------------------|----|
| Kit contents | AKGLU96.400/410 | 3 |
| Kit contents | AKGLU96.1200/1210 | 3 |
| Storage conditions | | 5 |
| Limitations of use and interfering factors | | 5 |
| Precautions | | 5 |
| Technical information, questions | | 6 |
| GLU test principle | | 7 |
| Protocol | | 8 |
| Subculture of cells to 96-well plates | | 8 |
| Preparation of test compound stock solutions | | 10 |
| Preparation of the negative control | | 10 |
| Exposure of the cells with test compounds | | 11 |
| Recommended 96-well plate configuration | | 13 |
| GLU Test Procedure | | 14 |
| Quality control of the assay | | 17 |
| Data Analysis | | 18 |

Kit contents AKGLU96.400/410

| | | |
|--------|-----------------|------------------------------------|
| GLU I | GOD/POD Reagent | 1 x 39.2 ml (after reconstitution) |
| GLU II | Substrate | 1 x 1 ml (after reconstitution) |

1 Instruction manual

9 sterile reagent reservoirs (AKGLU96.410 only)

10 96-well microplates (AKGLU96.410 only)

Kit contents AKGLU96.1200/1210

| | | |
|--------|-----------------|------------------------------------|
| GLU I | GOD/POD Reagent | 3 x 39.2 ml (after reconstitution) |
| GLU II | Substrate | 3 x 1 ml (after reconstitution) |

1 Instruction manual

24 sterile reagent reservoirs (AKGLU96.1210 only)

32 96-well microplates (AKGLU96.1210 only)

Material required but not provided:

Test cells
Culture medium
Sterile water
12N H₂SO₄ or 37% HCl

96-well microplates (AKGLU96.400/1200 only)
Sterile reagent reservoirs (AKGLU96.400/1200 only)

Additional material:

A glucose standard solution 1 mg/ml is available separately. It allows to calculate the absolute amount of glucose consumed, but is not needed to calculate IC₅₀'s.

Storage conditions

All reagents must be stored at 2-8°C. After reconstitution, the Glucose Working Solution is stable when protected from light at 2-8°C for up to 1 month. Discard if turbidity develops or color forms.

Limitations of use and interfering factors

This kit is **for research use only**, and **not for human diagnostic purposes**.

Erroneous results may be obtained upon uneven evaporation of culture fluid. Colored compounds and substances inhibiting GOD/POD enzymes may lead to erroneous results.

Precautions

Some components of this kit are potentially carcinogenic or corrosive; it is advisable to work in a hood and to wear glasses, gloves and a mask. After skin contact with any reagents of this kit wash affected areas with water and soap.

GLU I and GLU II may be harmful if swallowed, inhaled, or absorbed through skin. In case of contact of eyes, immediately flush eyes with copious amounts of water and consult a physician.

To protect your multichannel pipettor from corrosion, it is advisable to use filter tips when dispensing H₂SO₄ or HCl.

Technical information, questions

For any questions, supplementary information or suggestions, please contact the technical support department of Aniara:

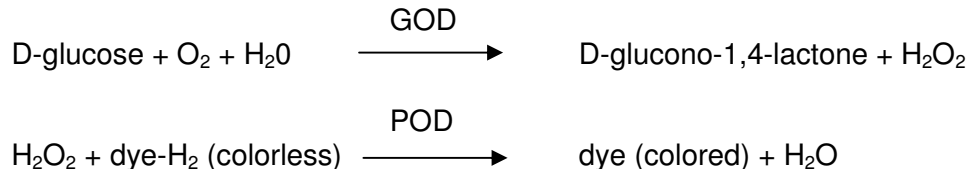
Phone : 866-783-3797
Fax : 513-573-9241
Email : info@aniara.com

**Important note:
Please read the complete manual carefully before starting the assay!**

GLU test principle

Many cultured cells continually consume glucose from their culture media for the generation of biosynthetic intermediates. By knowing the initial glucose concentration in the media, its consumption rate and an IC₅₀ value may be assessed by measuring glucose levels in the culture medium after incubation in the absence and presence of a test compound. Differences of glucose consumption in treated and untreated cells reflect changes in their metabolic state after drug exposure.

The assay allows to determine the physiological state of cultured cells by measuring glucose consumption. This procedure utilizes the coupled activities of glucose oxidase (GOD) and peroxidase (POD):



The amount of oxidized dye in the supernatant is measured spectrophotometrically at 540 nm.

Protocol

Subculture of cells to 96-well plates

Note:

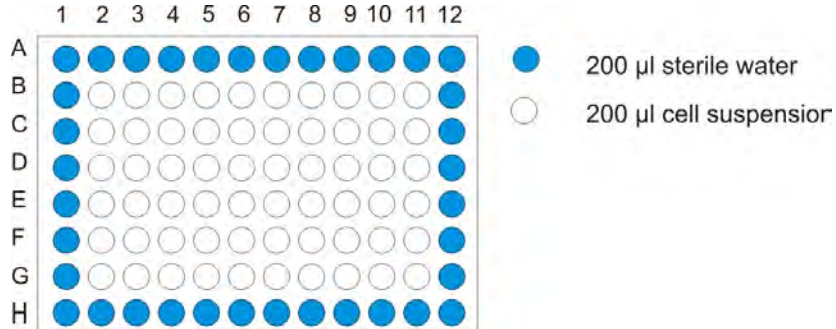
The cell seeding step can easily result in uneven cell densities in the wells of the microplates. Make sure your cell suspension is homogeneous and devoid of large cell aggregates!

Cell density:

Optimal sensitivity is obtained with near-confluent cells at the time of the assay. The actual cell number to be used depends on the size of the cells, the culture doubling time and the duration of the culture phase before the assay is performed. For average sized adherent cells such as mouse fibroblasts and a total culture phase of 48 hrs we recommend to seed 20'000 cells into each well. Fewer cells may be necessary for longer exposure times and larger cells. Optimal sensitivity of the assay is obtained when you choose your cell densities and total culture time such that a substantial amount of glucose in the growth control wells (GC and SC, page 11) has been consumed by the time of the assay.

- Trypsinize the cells according to the standard operating procedures of your laboratory. Optimally, cells in the log phase of growth should be used.
- Resuspend the trypsinized cells in complete culture medium such that the desired cell number per well is present in 200 µl of medium.
- Pour sterile water into a sterile reagent reservoir.

- Dispense 200 μ l of the sterile water in each well of rows A and H, and in each well of columns 1 and 12 (see figure), to reduce culture medium evaporation during incubation. (Erroneous results may be obtained upon uneven evaporation of culture fluid.)
- Pour the cell suspension into the same sterile reagent reservoir.
- Dispense 200 μ l of cell suspension into the remaining wells of the 96-well plates.



- Incubate the plate in a humidified incubator at 37°C, 5% of CO₂ overnight or for 24 hours.

Preparation of test compound stock solutions

We recommend to use the plate layout described below. This allows to evaluate 2 compounds per plate in triplicate, 8 serial dilutions, with negative and positive controls.

- Prepare 8 sterile concentrations of each test compound that are 10X more concentrated than the concentrations to be used in the assay: Prepare the highest desired concentration and then the seven lower concentrations by serial dilutions with appropriate solvent. Use culture medium as solvent if possible.
- Dilute each 10X concentration 1:10 with culture medium

Note that it may be necessary to make more concentrated stock solutions in order to avoid final solvent concentrations that may interfere with cell growth. If DMSO, ethanol or methanol are used as solvents, the final solvent concentration should not exceed 2%. Equal solvent concentrations should be used for all compound solutions.

Preparation of the negative control

For 1 plate:

- Mix 500 μ l of solvent with 4.5 ml of culture medium (if 10X concentration of test compounds is used) (SC).

Exposure of the cells with test compounds

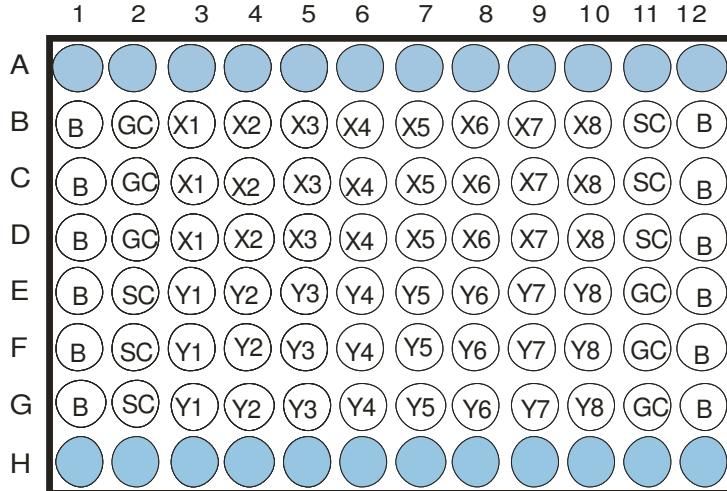
- Inspect the cells with a microscope. Cells should be distributed evenly between wells and look healthy.
- Remove the culture medium sterily from each well either with a multi-channel pipette (recommended) or by using a sterile pipette attached to a vacuum source. Avoid scratching the bottom of the wells with the cells. The removed medium should be replaced rapidly with the test compounds in medium to avoid stress and cell death due to drying cell layers.

Recommended dosing configuration (see figure below):

- Add 200 μ l of culture medium to wells B2, C2, D2, E11, F11, and G11 (cell growth control = GC).
- Add 200 μ l of culture medium - solvent mixture (page 10) to wells E2, F2, G2, B11, C11 and D11 (solvent control = SC) and to the wells of columns 1 and 12 (blank = B).
- Add 200 μ l of the lowest test compound concentrations (X1) to wells B, C, D of column 3, 200 μ l of test compound concentration X2 to wells B, C, D of column 4 and proceed through column 10 by adding 200 μ l of test compound concentrations X3-X8.

- Add 200 μ l of the lowest test compound concentrations (Y1) to wells E, F, G of column 3, 200 μ l of test compound concentration Y2 to wells E, F, G of column 4 and proceed through column 10 by adding 200 μ l of test compound concentrations Y3-Y8.
- Incubate the plate for the desired length of time.

Recommended 96-well plate configuration



Rows A + H: sterile water

B: culture medium + solvent without cells (negative control)

GC: culture medium + cells (cell growth control)

SC: culture medium + cells + solvent (solvent control)

X1, X2, ..., X8 and Y1, Y2, ..., Y8: culture medium + cells + different concentrations of two compounds X, Y.

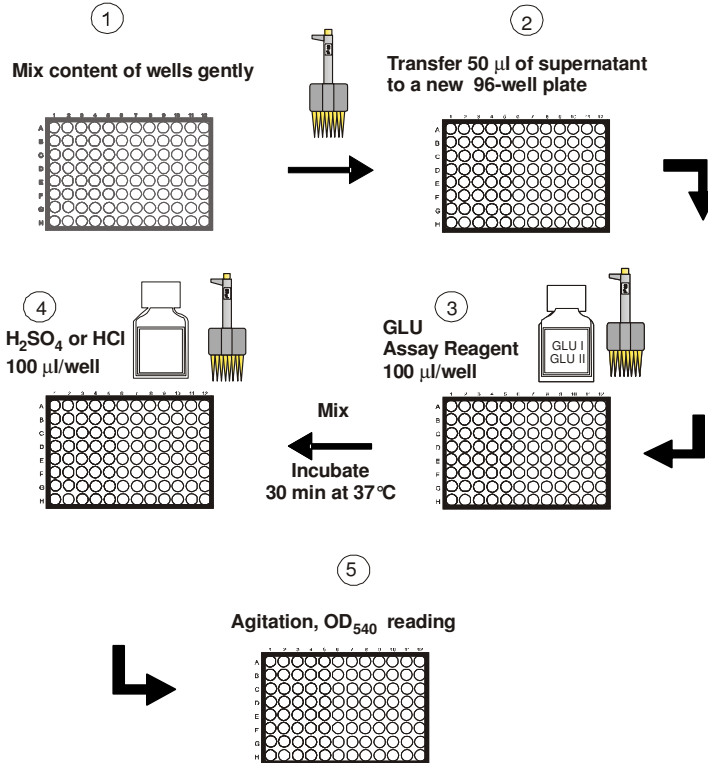
GLU Test Procedure

Before the assay, reconstitute the following bottle contents and prepare the Assay Reagent:

- Reconstitute the contents of the capsule in GLU I with 39.2 ml sterile water. Pipette up and down until completely dissolved. If necessary warm to 37°C. Avoid the formation of foam!
- Remove the desiccant bag from the GLU II vial. Reconstitute the GLU II tablet with 1.0 ml of sterile water. Invert bottle several times until contents are completely dissolved. The solution may appear milky. This does not interfere with the assay.
- Prepare the Assay Reagent: Add 0.8 ml of dissolved GLU II to the amber bottle GLU I. Invert bottle several times to mix. Solution is stable for up to 1 month at 2-8°C protected from light. Discard if turbidity develops.
- Remove the plate from the incubator
- Mix the content of the wells by a gentle orbital agitation. Be careful not to disrupt the cellular layer.
- Note: If you use culture medium with a high glucose content such as Ham F-12 or RPMI 1640, you may have to dilute the supernatant. We recommend a 1:20 dilution with water for media containing 2 g/l of glucose. Media with other glucose content should be diluted accordingly. This kit measures glucose from about 3 – 200 µg/ml.
- With a multichannel pipettor, transfer 50 µl of the (diluted) supernatant from each well to new 96-well plate duplicating the previous plate configuration.

- Add 100 µl/well of Assay Reagent.
- Incubate for 30 minutes at 37 °C.
- Stop the reaction of each well by adding 100 µl/well 12 N H₂SO₄ or 37% HCl (not provided)
- Mix and read the OD of each well at 540 nm. (Air bubbles may interfere with the measurement and should be removed, e.g. by quickly moving with a gas flame over the wells; CAUTION!)

GLU assay



Quality control of the assay

The mean OD values in the wells without test sample (solvent control, SC) correspond to a viability of 100% (wells E2, F2, G2, B11, C11 and D11).

The solvent controls (SC) are placed at the left and right side of the 96-well microplate to detect systematic errors. The assay is acceptable, if the left and right sided mean values do not differ more than 15% from the mean of all solvent controls (+/- 15%)

The cell growth controls (GC) allow to detect solvent effects. If the solvent control values differ significantly from the growth control values, inhibition values of test compounds are to be interpreted with caution. If possible chose a different solvent.

Data Analysis

Read the plate at 540 nm. The rate of glucose consumption is calculated for every test compound concentration. The mean OD values of the blanks (wells without cells, columns 1 and 12) correspond to an consumption rate of 0%.

Calculate the normal (uninhibited) rate (Rn) of consumption:

$$R_n = \text{Mean of blank OD minus mean OD of solvent controls (SC)}$$

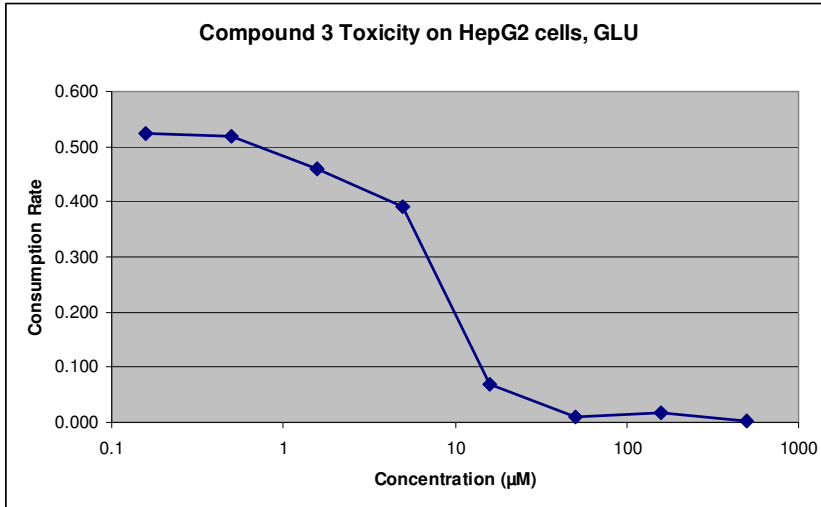
Similarly, the consumption rate (Rt) for every concentration of the test compound is calculated:

$$R_t = \text{Mean of blank OD minus mean OD of concentration (c) of test compound}$$

Shown here is an example how results may look:

| | Blank | GC | SC | 0.158 | 0.500 | 1.58 | 5 | 15.8 | 50 | 158 | 500 |
|------------------|-------|-------|---------|---------|--------|--------|--------|-------|--------|--------|---------|
| Consumption rate | 1.353 | 0.842 | 0.830 | 0.828 | 0.835 | 0.892 | 0.962 | 1.284 | 1.342 | 1.336 | 1.350 |
| (Rn-Rt)/Rt | | 0.511 | 0.523 | 0.525 | 0.518 | 0.461 | 0.391 | 0.069 | 0.011 | 0.017 | 0.003 |
| log (Rn-Rt)/Rt | | | 0.000 | -0.003 | 0.010 | 0.135 | 0.339 | 6.613 | 47.879 | 30.317 | 192.704 |
| log conc. | | | #Z AHL! | #Z AHL! | -1.990 | -0.869 | -0.470 | 0.820 | 1.680 | 1.482 | 2.285 |
| | | | | -0.801 | -0.301 | 0.199 | 0.699 | 1.199 | 1.699 | 2.199 | 2.699 |

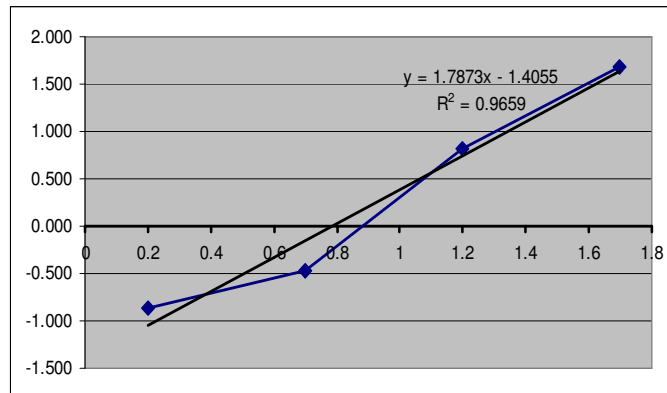
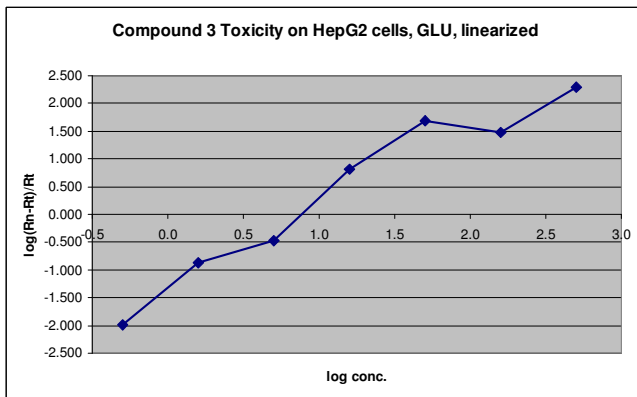
The results may be represented graphically: $R_t = f(c)$:



A linear regression rate may be calculated as follows:

$$\text{Log} \left(\frac{R_n - R_t}{R_t} \right) = f(\log c)$$

With the above example this gives:



The IC_{50} is obtained from the intercept on the x-axis. Note that negative $(Rn-Rt)/Rt$ values can not be used with this analysis! A regression line using the central linear part of the curve can be used to obtain a more precise estimation of the IC_{50} . In this case $(y=0)$: $(\log IC_{50}) = (1.4055 / 1.7873) = 0.7864$, giving an IC_{50} of 6.1 μM .

IC_{50} values can also be calculated using the CelTox software available from Xenometrix.

Absolute glucose levels:

If needed, a glucose standard solution can be used to calculate the glucose consumption based on absolute values (available separately from Aniara). The standard solution contains 1 mg/ml glucose. A standard curve OD₅₄₀ vs. glucose concentration allows then to express the effect of an inhibitor in mg/ml glucose consumption rather than OD₅₄₀ units. The useful range of this kit is 3 – 200 µg/ml glucose. For plain IC₅₀ calculations the absolute values of glucose consumption are not needed, however.