

In Cytotox - LDH-GLU-XTT-SRB

4 - Parameter Cytotoxicity Kit

Extracellular Lactate Dehydrogenase LDHe	-	Membrane Integrity
Glucose Consumption GLU	-	Metabolic Activity
Tetrazolium XTT	-	Mitochondrial Activity
Sulforhodamine B SRB	-	Total Protein Content

Art. No. AKLGXS 96.300
Art. No. AKLGXS 96.310
Art. No. AKLGXS 96.1200
Art. No. AKLGXS 96.1210

For research use only

Version 2.4 06/2010

Table of contents

Kit contents	AKLGXS 96.300/310	3
Kit contents	AKLGXS 96.1200/1210	4
Storage conditions		6
Limitation of use and interfering factors.....		8
Precautions.....		9
Technical information, questions.....		10
Extracellular LDH test principle		11
GLU test principle		12
XTT test principle.....		13
SRB test principle		14
Protocol		15
Subculture of cells to 96-well plates		15
Preparation of test compound stock solutions		17
Preparation of the negative control and the total LDH control.....		17
Exposure of the cells with test compounds.....		18
Recommended 96-well plate configuration.....		20
Extracellular LDH Test Procedure		21
GLU Test Procedure		24
XTT Test Procedure		27
SRB Test Procedure		29
Quality control of the assay.....		32
Data analysis of the LDH assay		33
Data Analysis of the GLU Assay		36
Data Analysis of the XTT and SRB Assays.....		40

Kit contents **AKLGXS 96.300/310**

LDH I	Reconstitution Solution	1 x 90 ml
LDH II	NADH	1 x 65 ml (after reconstitution)
LDH III	Pyruvate	1 x 15 ml (after reconstitution)
GLU I	GOD/POD Reagent	1 x 39.2 ml (after reconstitution)
GLU II	Substrate	1 x 1 ml (after reconstitution)
XTT I	Substrate	1 x 16.5 ml
XTT II	Buffer	1 x 0.165 ml
SRB I	Wash solution	1 x 100 ml
SRB II	Fixing solution	1 x 33 ml
SRB III	Labeling solution	1 x 16.5 ml
SRB IV	Rinsing solution	1 x 250 ml
SRB V	Solubilization solution	1 x 75 ml

1 Instruction manual

26 sterile reagent reservoirs (AKLGXS 96.310 only)

12 96-well microplates (AKLGXS 96.310 only)

Kit contents **AKLGXS 96.1200/1210**

LDH I	Reconstitution Solution	2 x 180 ml
LDH II	NADH	2 x 130 ml (after reconstitution)
LDH III	Pyruvate	1 x 60 ml (after reconstitution)
GLU I	GOD/POD Reagent	3 x 39.2 ml (after reconstitution)
GLU II	Substrate	3 x 1 ml (after reconstitution)
XTT I	Substrate	1 x 66 ml
XTT II	Buffer	1 x 0.66 ml
SRB I	Wash solution	1 x 400 ml
SRB II	Fixing solution	1 x 132 ml
SRB III	Labeling solution	1 x 66 ml
SRB IV	Rinsing solution	2 x 500 ml
SRB V	Solubilization solution	1 x 300 ml

1 Instruction manual

104 sterile reagent reservoirs (AKLGXS 96.1210 only)

48 96-well microplates (AKLGXS 96.1210 only)

Material required but not provided:

Test cells

Culture medium

Sterile water

Phosphate-buffered saline PBS

Triton X-100

12N H₂SO₄ or 37% HCl

96-well microplates (AKLGXS 96.300/1200 only)

Sterile reagent reservoirs (AKLGXS 96.300/1200 only)

Storage conditions

All reagents are shipped at ambient temperature, but need different handling and storage upon arrival for optimal performance and shelf life as indicated on the vials.

LDH:

Upon arrival

LDH I and LDH III should be stored at 4 °C
LDH II should be stored at -20 °C until use.

LDH II (NADH) should be white to lightly yellow. It should not be used if it has turned into an intense yellow color. NADH is subject to photodegradation. Excessive exposure to light may reduce accuracy and sensitivity.

Storage after reconstitution

Reconstituted LDH II (NADH) solution may be stored refrigerated (4 °C) and protected from light for not more than 1 day. Storage for several months is possible in a ultra-low freezer (< -40 °C). Solutions of pyruvate (LDH III) may be stored at -20 °C or below for up to 2 months.

GLU:

GLU I and GLU II must be stored at 2-8 °C. After reconstitution, the Glucose Working Solution is stable when protected from light at 2-8 °C for up to 1 month. Discard if turbidity develops or color forms.

XTT:

XTT I and XTT II are shipped at ambient temperature, but need to be frozen at -20 °C upon arrival for optimal performance and shelf life as indicated on the vials. If only part of the kit is to be used at once we recommend to prepare aliquots of the reagents upon arrival. Avoid repeated (>2x) freezing and thawing.

The XTT solutions are photosensitive and have to be stored protected from light.

SRB:

SRB I, SRB IV and SRB V can be stored at RT or at 4 °C. SRB II and SRB III should be stored at 4 °C.

Limitation of use and interfering factors

This kit is **for research use only**, and **not for human diagnostic purposes**.

- Colored compounds and substances inhibiting dehydrogenases may lead to erroneous results in the LDHe and XTT assays.
- We recommend to use medium with serum ($\leq 5\%$) for this assay. If this is not feasible, we recommend to add of serum (1% final) or BSA (0.1% final) to the wells just prior to the transfer of the supernatant for the LDHe assay.
- High concentrations of FCS should be avoided as it can contain LDH and contribute to elevated background activity.
- Erroneous results may be obtained by microbial contamination of the cultures or reagents, which contributes to the cleavage of XTT and formation of XTT formazan. Cultures containing microorganisms may not be tested with this method.
- Colored compounds and substances inhibiting GOD/POD enzymes may lead to erroneous results.

Precautions

Some components of this kit are potentially carcinogenic or corrosive; it is advisable to work in a hood and to wear glasses, gloves and a mask. After skin contact with any reagents of this kit wash affected areas with water and soap.

Additional information on individual kit components:

LDH: NADH (LDH II) is toxic. In case of contact of eyes with NADH solution, immediately flush eyes with copious amounts of water and consult a physician.

GLU: GLU I and GLU II may be harmful if swallowed, inhaled, or absorbed through skin. In case of contact of eyes, immediately flush eyes with copious amounts of water and consult a physician. To protect your multichannel pipettor from corrosion, it is advisable to use filter tips when dispensing H₂SO₄ or HCl.

XTT: In case of contact of eyes with XTT solutions, immediately flush eyes with copious amounts of water and consult a physician.

SRB: Fixing Solution SRB II may be harmful if swallowed, inhaled or absorbed through skin. Fixing Solution SRB II can cause severe chemical burns. In case of contact of eyes with SRB II, SRB III, SRB IV or SRB V solutions, immediately flush eyes with copious amounts of water and consult a physician.

Technical information, questions

For any questions, supplementary information or suggestions, please contact the technical support department of Aniara:

Phone : (513) 770-1991
Fax : (513) 573-9241
Email: info@aniara.com

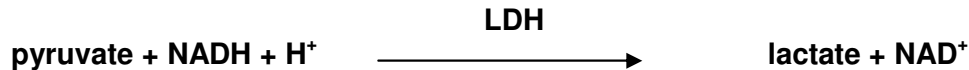
**Important note:
Please read the complete manual carefully before starting the assay!**

Extracellular LDH test principle

Cell death or cytotoxicity is classically evaluated by the quantification of plasma membrane damage. Lactate dehydrogenase (LDH) is a stable cytoplasmic enzyme present in all cells, and is rapidly released into the cell culture supernatant upon membrane damage or cell lysis. This assay is a fast and simple method to determine changes in the plasma membrane upon incubation with a test compound. The assay is carried out with an aliquot of the supernatant and leaves the cells undisturbed and they may therefore be used for further testing.

This version of the LDH test is unaffected by pyruvate present in the medium.

LDH reduces pyruvate to lactate by oxidizing NADH to NAD⁺:



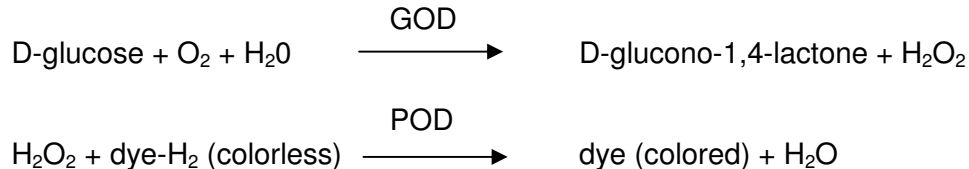
The consumption of NADH is measured spectrophotometrically by a decrease in the OD at 340 nm.

Determinations of LDHe can be performed with the same cells at several time points of test compound exposure.

GLU test principle

Many cultured cells continually consume glucose from their culture media for the generation of biosynthetic intermediates. By knowing the initial glucose concentration in the media, its consumption rate and an IC₅₀ value may be assessed by measuring glucose levels in the culture medium after incubation in the absence and presence of a test compound. Differences of glucose consumption in treated and untreated cells reflect changes in their metabolic state after drug exposure.

The assay allows to determine the physiological state of cultured cells by measuring glucose consumption. This procedure utilizes the coupled activities of glucose oxidase (GOD) and peroxidase (POD):



The amount of oxidized dye in the supernatant is measured spectrophotometrically at 540 nm.

XTT test principle

Viable cells depend on an intact mitochondrial respiratory chain and an intact mitochondrial membrane. Toxic agents can be identified using mitochondrial dehydrogenases from viable cells.

XTT (2,3-bis[2-methoxy-4-nitro-5-sulfopheny]-2H-tetrazolium-5-carboxyanilide inner salt) is a tetrazolium salt that is cleaved to formazan by the succinate dehydrogenase system which belongs to the mitochondrial respiratory chain, and is only active in viable cells. The mitochondrial succinate dehydrogenase reduces the yellow tetrazolium salt into soluble orange formazan in the presence of an electron coupling reagent.

In contrast to the insoluble formazan salt crystals of MTT, XTT is converted to a water-soluble formazan product without the need for a solubilization step prior to spectrophotometric quantification. The enzyme activity is measured at 480 nm (optimum) or at 450 nm.

SRB test principle

Cell proliferation, measured as total protein synthesis, is a very sensitive toxicology marker. Sulforhodamine B (SRB, Acid Red 52) is an anionic dye that binds electrostatically to cellular proteins. The fixed dye is solubilized and is measured photometrically at OD 540 nm with a reference filter of 690 nm. The OD values correlate with total protein content and therefore with cell number.

Protocol

Subculture of cells to 96-well plates

Note:

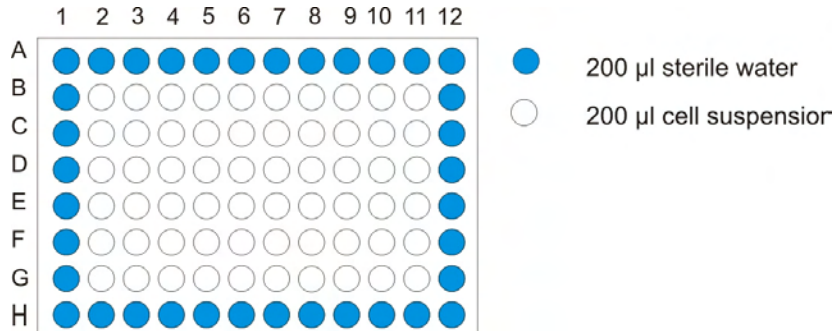
The cell seeding step can easily result in uneven cell densities in the wells of the microplates. Make sure your cell suspension is homogeneous and devoid of large cell aggregates!

Cell density:

Optimal sensitivity is obtained with near-confluent cells at the time of the assay. The actual cell number to be used depends on the size of the cells, the culture doubling time and the duration of the culture phase before the assay is performed. For average sized adherent cells such as mouse fibroblasts and a total culture phase of 48 hrs we recommend to seed 20'000 cells into each well. Fewer cells may be necessary for longer exposure times and larger cells.

- Trypsinize the cells according to the standard operating procedures of your laboratory. Optimally, cells in the log phase of growth should be used.
- Resuspend the trypsinized cells in complete culture medium such that the desired cell number per well is present in 200 µl of medium.
- Pour sterile water into a sterile reagent reservoir.

- Dispense 200 μ l of the sterile water in each well of rows A and H, and in each well of columns 1 and 12 (see figure), to reduce culture medium evaporation during incubation. (Erroneous results may be obtained upon uneven evaporation of culture fluid.)
- Pour the cell suspension into the same sterile reagent reservoir.
- Dispense 200 μ l of cell suspension into the remaining wells of the 96-well plates.



- Incubate the plate in a humidified incubator at 37°C, 5% of CO₂ overnight or for 24 hours.

Preparation of test compound stock solutions

We recommend to use the plate layout described below. This allows to evaluate 2 compounds per plate in triplicate, 8 serial dilutions, with negative and positive controls.

- Prepare 8 sterile concentrations of each test compound that are 10X more concentrated than the concentrations to be used in the assay: Prepare the highest desired concentration and then the seven lower concentrations by serial dilutions with appropriate solvent. Use culture medium as solvent if possible.
- Dilute each 10X concentration 1:10 with culture medium

Note that it may be necessary to make more concentrated stock solutions in order to avoid final solvent concentrations that may interfere with cell growth. If DMSO, ethanol or methanol are used as solvents, the final solvent concentration should not exceed 2%. Equal solvent concentrations should be used for all compound solutions.

Preparation of the negative control and the total LDH control

For 1 plate:

- Mix 500 μ l of solvent with 4.5 ml of culture medium (if 10X concentration of test compounds is used) (SC).
- Prepare 700 μ l of culture medium containing 1% Triton X-100 for the total LDH control (TL)

Exposure of the cells with test compounds

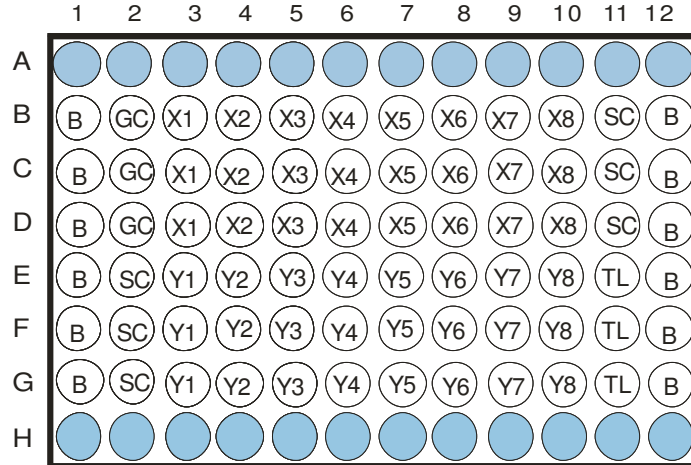
- Inspect the cells with a microscope. Cells should be distributed evenly between wells and look healthy.
- Remove the culture medium sterily from each well either with a multi-channel pipette (recommended) or by using a sterile pipette attached to a vacuum source. Avoid scratching the bottom of the wells with the cells. The removed medium should be replaced rapidly with the test compounds in medium to avoid stress and cell death due to drying cell layers.

Recommended dosing configuration (see figure below):

- Add 200 μ l of culture medium to wells B2, C2 and D2 (cell growth control = GC).
- Add 200 μ l of culture medium with 1% Triton X-100 to wells E11, F11 and G11 (total LDH control = TL)
- Add 200 μ l of culture medium – solvent mixture (page 17) to wells E2, F2, G2, B11, C11 and D11 (solvent control = SC) and to the wells of columns 1 and 12 (blank = B).
- Add 200 μ l of the lowest test compound concentrations (X1) to wells B, C, D of column 3, 200 μ l of test compound concentration X2 to wells B, C, D of column 4 and proceed through column 10 by adding 200 μ l of test compound concentrations X3-X8.

- Add 200 μ l of the lowest test compound concentrations (Y1) to wells E, F, G of column 3, 200 μ l of test compound concentration Y2 to wells E, F, G of column 4 and proceed through column 10 by adding 200 μ l of test compound concentrations Y3-Y8.
- Incubate the plate for the desired length of time. Several LDHe measurements can be performed at different time points of compound exposure.

Recommended 96-well plate configuration



Rows A + H: sterile water

B: culture medium + solvent without cells (negative control)

GC: culture medium + cells (cell growth control)

SC: culture medium + cells + solvent (solvent control)

TL: culture medium + cells + 1% Triton X-100 (total LDH content)

X1, X2, ..., X8 and Y1, Y2, ..., Y8: culture medium + cells + different concentrations of two compounds X, Y.

Extracellular LDH Test Procedure

Caution: the contents of LDH II and LDH III may stick to the walls of the bottles. Add the required volume of LDH I and invert the bottles until the contents are completely dissolved. Immediately before use, reconstitute LDH II and LDH III as follows:

Small kit (AKLGXS 96.300 and AKLGXS 96.310) with 65 ml and 15 ml, respectively, of LDH I reconstitution solution.

This provides enough solution for 4 plates.

Large kit: (AKLGXS 96.1200 and AKLGXS 96.1210) with 130 ml and 60 ml, respectively, of LDH I reconstitution solution. This provides enough solution for 8 (LDH II) and 16 (LDH III) plates. Reconstitute the second LDH II bottle only when needed (more than 8 plates to be tested).

If fewer plates are used at a time, the LDH II (NADH) solution may be stored in a ultra-low freezer (<40°C). Solutions of NADH may be kept refrigerated and protected from light for not more than 1 day. Solutions of pyruvate (LDH III) may be stored at -20°C or below for up to 2 months.

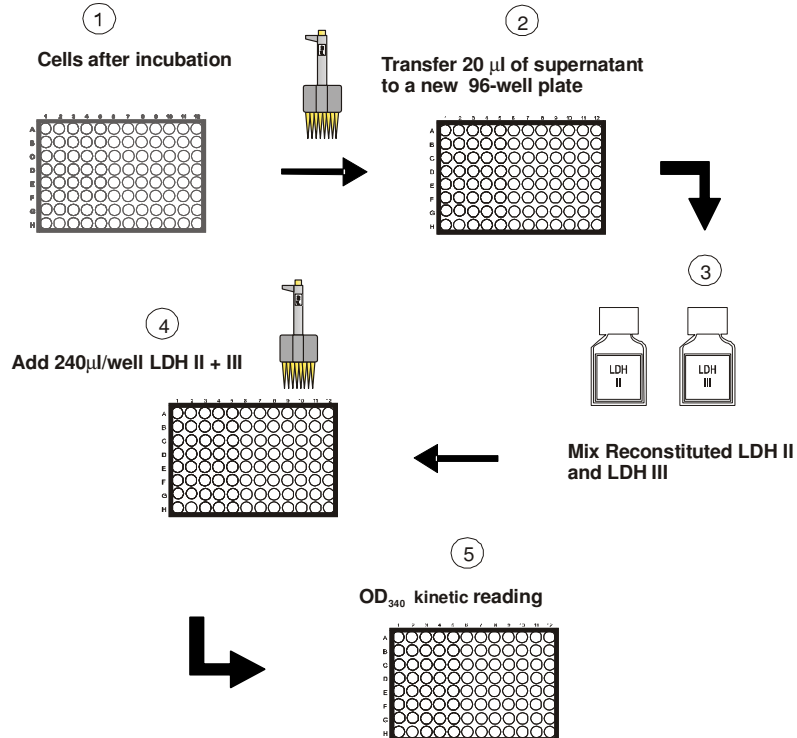
It is recommended to pre-heat the LDH I, II, III solutions at 37°C in a water bath before use

- Remove the 96-well plate from the incubator
- With a multichannel pipettor, transfer 20 µl of the supernatant from each well (rows B to G) to a new 96-well plate duplicating the previous plate configuration. Return the original plate to the incubator for the other tests.

- Mix 16 ml LDH II with 3.4 ml LDH III (for 1 plate, 72 wells).
- Add 240 μ l/well of the LDH II / LDH III mix. This starts the reaction.
- Start immediately to read kinetically at 340 nm for 25 min at 37°C. Readings can also be done at RT, with an extended incubation time of 1 hr.

Air bubbles interfere with the measurement and must be removed prior to reading, e.g. by quickly moving with a gas flame over the wells; (CAUTION!). A hair dryer can be used for the same purpose.

LDHE assay



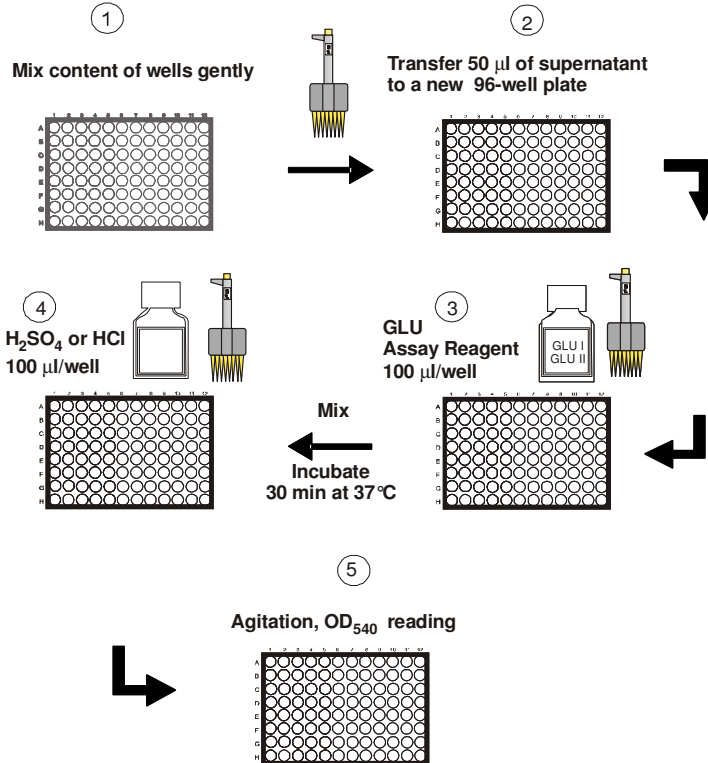
GLU Test Procedure

Before the assay, reconstitute the following bottle contents and prepare the Assay Reagent:

- Reconstitute the contents of the capsule in GLU I with 39.2 ml sterile water. Pipette up and down until completely dissolved. If necessary warm to 37°C. Avoid the formation of foam!
- Reconstitute GLU II with 1.0 ml of sterile water. Invert bottle several times until contents are completely dissolved.
- Prepare the Assay Reagent: Add 0.8 ml of GLU II to the amber bottle GLU I. Invert bottle several times to mix. Solution is stable for up to 1 month at 2-8°C protected from light. Discard if turbidity develops.
- Remove the plate from the incubator
- Mix the content of the wells by a gentle orbital agitation. Be careful not to disrupt the cellular layer.
- Note: If you use culture medium with a high glucose content such as Ham F-12 or RPMI 1640, you may have to dilute the supernatant. We recommend a 1:20 dilution with water for media containing 2 g/l of glucose. Media with other glucose content should be diluted accordingly. This kit measures glucose from about 1 – 100 µg/ml.
- With a multichannel pipettor, transfer 50 µl of the (diluted) supernatant from each well to new 96-well plate duplicating the previous plate configuration.
- Add 100 µl/well of Assay Reagent.

- . Incubate for 30 minutes at 37 °C.
- . Stop the reaction of each well by adding 100 µl/well 12 N H₂SO₄ or 37% HCl (not provided)
- . Mix and read the OD of each well at 540 nm. (Air bubbles may interfere with the measurement and should be removed, e.g. by quickly moving with a gas flame over the wells; CAUTION!)

GLU assay

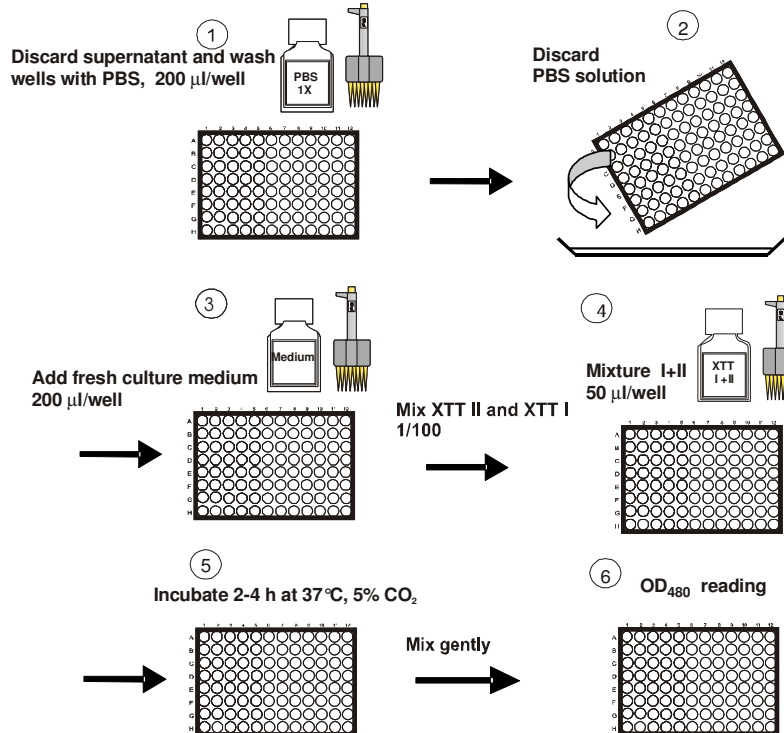


XTT Test Procedure

- Warm the XTT solutions to 37°C in a water bath until a clear solution is obtained.
- Remove the 96-well plate from the incubator
- Wash the cells with PBS (not provided) and add 200 µl/well of fresh culture medium in order to avoid any interaction of the test compound with the dye
- Immediately before use, mix the XTT II and XTT I solutions at a 1 : 100 ratio. For 1 plate (72 wells) mix 4 ml XTT I and 40 µl XTT II.
- Add 50 µl of this mixture to all wells, including the blanks
- Incubate the plate for 2-3 hours at 37°C, 5% CO₂ . The incubation time may be varied between 1 – 4 hours depending on cell type and maximum cell density. ¹⁾
- Mix the content of the well very carefully by pipetting up and down or by orbital agitation to enhance dispersion. Pipetting up and down may be required in dense cultures to completely disperse the XTT formazan.
- Remove any air bubbles if present.
- Read the OD at 480 nm (or 450 nm) with a reference wave length at 690 nm

¹⁾ If visual inspection during the incubation shows a clear difference between "Blank" and "Solvent Control" wells a longer incubation is usually not necessary.

XTT assay

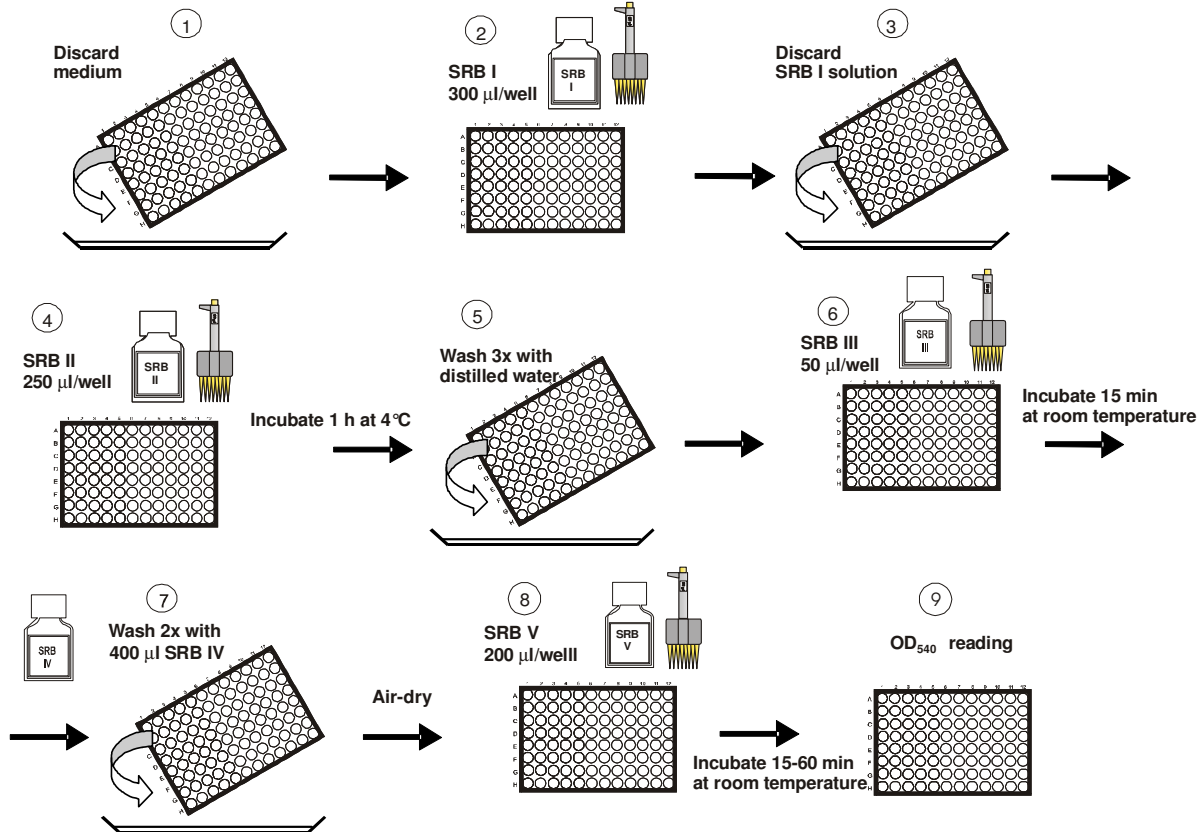


SRB Test Procedure

- Remove the medium with the XTT dye carefully, with the cells remaining attached to the bottom of the wells.
- Wash the cells with 300 µl/well wash solution SRB I.
- Add 100 µl fixing solution SRB II to each well.
- Incubate the plate for 1 hour at 4 °C.
- Wash the cells 3 times with 200 µl/well distilled or de-ionized water (not provided).
- Add 50 µl/well of labeling solution SRB III. Make sure bottom of wells is completely covered with dye.
- Incubate the plate for 15 minutes at room temperature.
- Wash 2 times with 400 µl/well rinsing solution SRB IV. Note: The wells should be completely filled with rinsing solution. Proceed quickly to avoid leaching of the fixed dye into the rinsing solution.
- After being washed, the cultures are air dried until no moisture is visible. At this stage the plate may be stored for many weeks.
- Dissolve the cells with 200 µl/well solubilization solution SRB V.
- Incubate for 15 to 60 minutes at room temperature.
- Mix gently using a multichannel pipette.

- Read the OD at 540 nm. If intense color (> 1.8) is observed, a suboptimal wavelength (490-530 nm) may be used instead. Measure the background absorbance with a reference filter at 690 nm.

SRB assay



Quality control of the assay

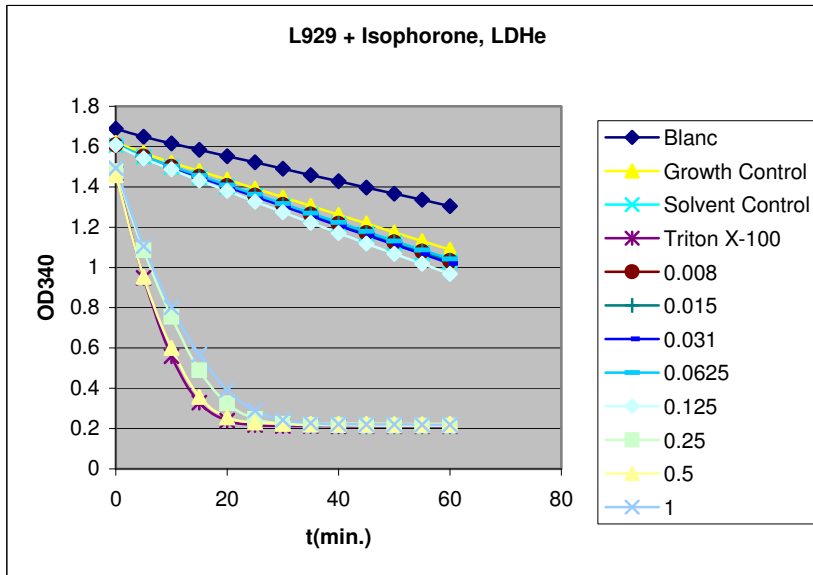
The mean OD values in the wells without test sample (solvent control, SC) correspond to a viability of 100% (wells E2, F2, G2, B11, C11 and D11).

The solvent controls (SC) are placed at the left and right side of the 96-well microplate to detect systematic errors. The assay is acceptable, if the left and right sided mean values do not differ more than 15% from the mean of all solvent controls (+/- 15%)

The cell growth controls (GC) allow to detect solvent effects. If the solvent control values differ significantly from the growth control values, inhibition values of test compounds are to be interpreted with caution. If possible chose a different solvent.

Data analysis of the LDH assay

After the kinetic reading, plot OD₃₄₀ vs. time (min.). This allows you to see the activities of test compounds relative to the B, SC, GC, and TL controls.



This graph shows the titration of Isophorone on L929 fibroblasts. It can be seen that there is a decrease of OD₃₄₀ even in the Blank control, due to LDH present in the FCS. Growth and Solvent Controls are a bit more active than the Blank probably due to the presence of LDH from the cultured cells. The Triton X-100 control gives the maximum activity after total lysis.

The highest concentration (1%) of Isophorone shows an apparent decrease of LDHe activity. This is possibly due to interference with the assay such as inhibition of the released LDH.

Inspect your graph and identify a time interval where the curves are almost linear. In the above example we would choose the interval from 0 to 10 min.

Determine the $\Delta OD/min$ for each well. Calculate the mean $\Delta OD/min$ for each test compound concentration. Extracellular LDH is expressed in Units as "nanomoles NADH consumed / min / ml". Calculate as follows:

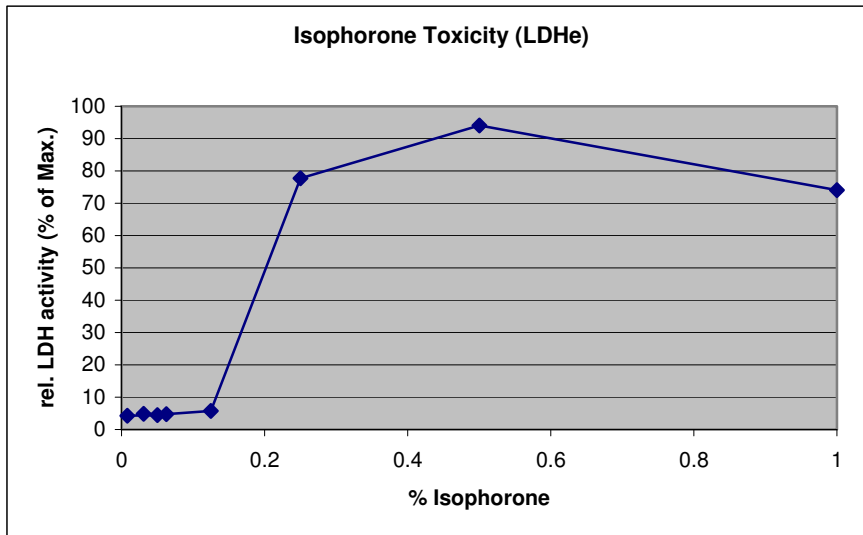
$$\text{NADH consumption} = \frac{\Delta OD/min \times 0.260 \times 1000}{6.2 \times 20}$$

0.260 ml: reaction volume in ml
1000 μ l: allows to calculate the result in ml
6.2: millimolar extinction coefficient of NADH at 340 nm
20 μ l: volume taken for the assay

For the above example this gives

	Blank	GC	SC	0.008	0.015	0.031	0.0625	0.125	0.25	0.5	1 Triton X-100	
t0 - t10	0.073	0.098	0.109	0.108	0.110	0.113	0.113	0.121	0.722	0.858	0.691	0.907
t0 - t10/min	0.007	0.010	0.011	0.011	0.011	0.011	0.011	0.012	0.072	0.086	0.069	0.091
t0 - t10/min - blank		0.003	0.004	0.004	0.004	0.004	0.004	0.005	0.065	0.079	0.062	0.083
Units NADH consumed (nMol/min/ml)		0.006	0.009	0.008	0.009	0.009	0.009	0.011	0.151	0.183	0.144	0.194
% of Max. (Triton X-100)		3	4	4	4	5	5	6	78	94	74	100

A graphic representation allows to determine the concentration of test compound giving an inhibition of 50% (IC₅₀): For Isophorone on L929 cells this is 0.2%.



Data Analysis of the GLU Assay

Read the plate at 540 nm. The rate of glucose consumption is calculated for every test compound concentration. The mean OD values of the blanks (wells without cells, columns 1 and 12) correspond to a consumption rate of 0%.

Calculate the normal (uninhibited) rate (Rn) of consumption:

$$R_n = \text{Mean of blank OD minus mean OD of solvent controls (SC)}$$

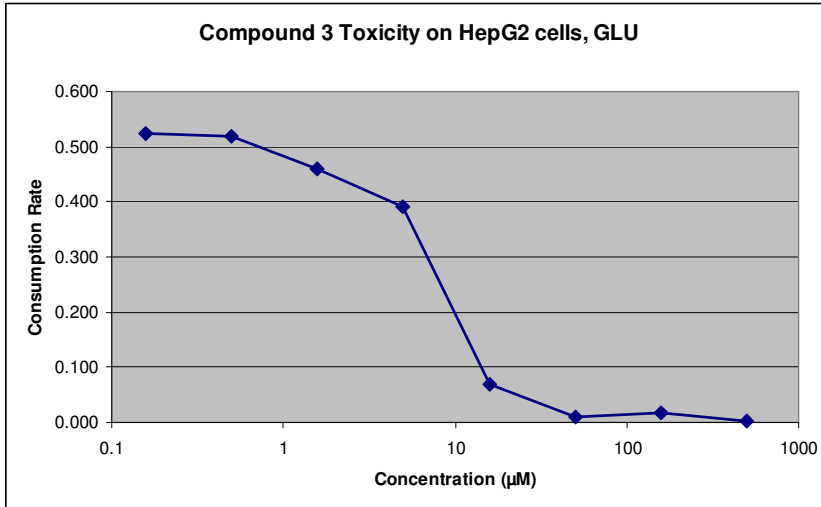
Similarly, the consumption rate (Rt) for every concentration of the test compound is calculated:

$$R_t = \text{Mean of blank OD minus mean OD of concentration (c) of test compound}$$

Shown here is an example how results may look:

	Blank	GC	SC	0.158	0.500	1.58	5	15.8	50	158	500
Consumption rate	1.353	0.842	0.830	0.828	0.835	0.892	0.962	1.284	1.342	1.336	1.350
(Rn-Rt)/Rt		0.511	0.523	0.525	0.518	0.461	0.391	0.069	0.011	0.017	0.003
log (Rn-Rt)/Rt			0.000	-0.003	0.010	0.135	0.339	6.613	47.879	30.317	192.704
log conc.			#Z AHL!	#Z AHL!	-1.990	-0.869	-0.470	0.820	1.680	1.482	2.285
				-0.801	-0.301	0.199	0.699	1.199	1.699	2.199	2.699

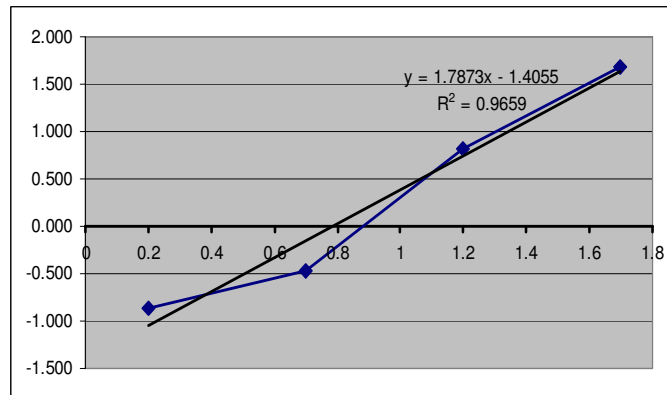
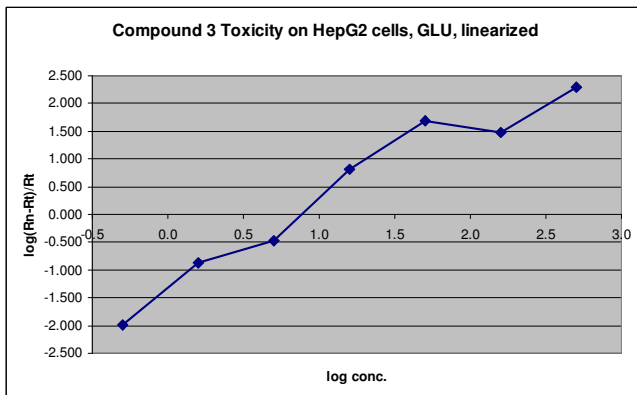
The results may be represented graphically: $R_t = f(c)$:



A linear regression rate may be calculated as follows:

$$\text{Log} \left(\frac{R_n - R_t}{R_t} \right) = f(\log c)$$

With the above example this gives:



The IC_{50} is obtained from the intercept on the x-axis. Note that negative $(Rn-Rt)/Rt$ values can not be used with this analysis! A regression line using the central linear part of the curve can be used to obtain a more precise estimation of the IC_{50} . In this case ($y=0$): $(\log IC_{50}) = (1.4055 / 1.7873) = 0.7864$, giving an IC_{50} of 6.1 μM .

IC_{50} values can also be calculated using the CelTox software available from Aniara.

Absolute glucose levels:

If needed, a glucose standard solution can be used to calculate the glucose consumption based on absolute values (available separately from Aniara). The standard solution contains 1 mg/ml glucose. A standard curve OD₅₄₀ vs. glucose concentration allows then to express the effect of an inhibitor in mg/ml glucose consumption rather than OD₅₄₀ units. The useful range of this kit is 1 – 100 µg/ml glucose. For plain IC₅₀ calculations the absolute values of glucose consumption are not needed, however.

Data Analysis of the XTT and SRB Assays

For each well subtract the OD₆₉₀ values from the OD₄₈₀ and OD₄₀₅ values.

Calculate the mean OD values for every test sample concentration.

Calculate the mean OD values of the blanks (columns 1 and 12). Correct the sample and solvent control OD's:

Mean OD of samples/controls – mean OD of blanks

Relative inhibition activity is then expressed as percent of solvent control:

$$\% \text{ inhibition} = 100 - (\text{corrected mean OD sample} \times 100 / \text{corrected mean OD solvent controls})$$

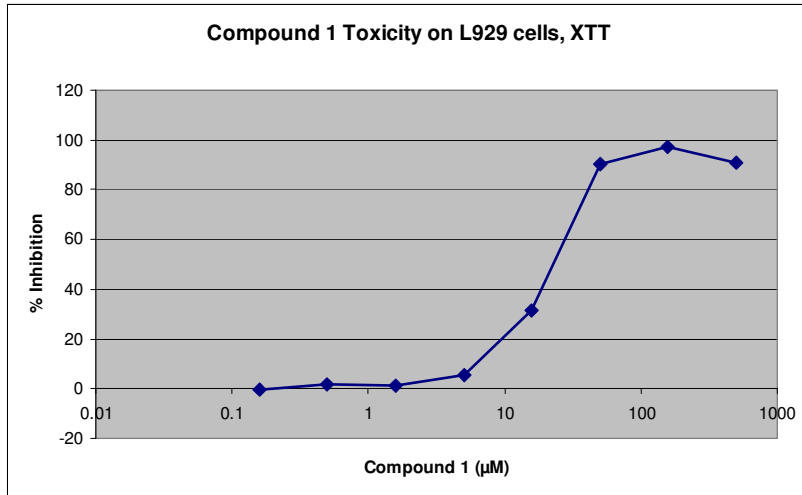
Plot the % inhibition of activity against the test compound concentration. For serial dilutions plot the concentrations on a log scale.

The 50% inhibiting concentration IC₅₀ can be determined graphically.

The example below shows the toxicity of a test compound on L929 cells measured with the XTT test. IC₅₀ is about 20 µM..

Example:

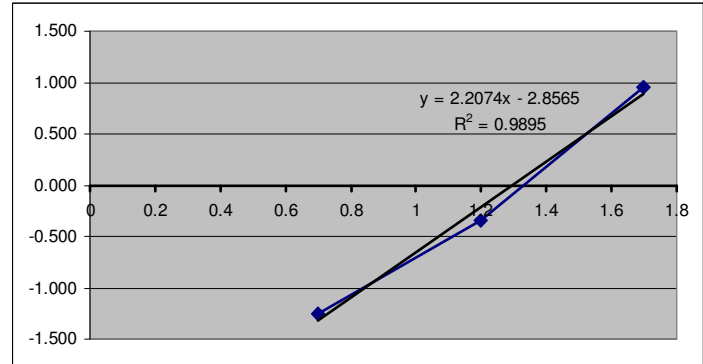
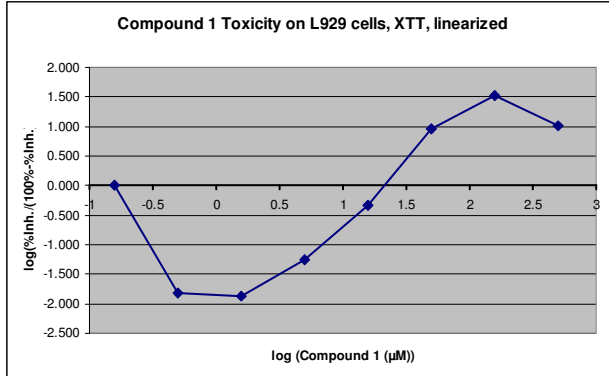
	Blank	GC	SC	0.158	0.500	1.58	5	15.8	50	158	500
Corrected	0.202	1.472	1.455	1.461	1.436	1.438	1.388	1.063	0.326	0.239	0.315
% Inhibition	0.000	1.270	1.253	1.259	1.234	1.236	1.186	0.861	0.124	0.037	0.113
$\%inh/(100\% - \%inh)$		-1.357	0.000	-0.479	1.516	1.357	5.347	31.285	90.104	97.047	90.982
$\log (\%inh/(100\% - \%inh))$			0.000	-0.005	0.015	0.014	0.056	0.455	9.105	32.865	10.088
log conc.			#Z AHL!	#Z AHL!	-1.813	-1.862	-1.248	-0.342	0.959	1.517	1.004
$\log (\%inh/(100\% - \%inh))$				-0.80134291	-0.30103	0.19865709	0.69897	1.19865709	1.69897	2.19865709	2.69897
				#Z AHL!	-1.813	-1.862	-1.248	-0.342	0.959	1.517	1.004



Alternatively you can plot:

Log (% inhibition / (100 -% inhibition)) vs. log (concentration)

The IC_{50} is obtained from the intercept on the x-axis. Note that values $\geq 100\%$ and $\leq 0\%$ can not be used with this analysis! A regression line using the linear part of the curve can be used to obtain a more precise estimation of the IC_{50} . In this case ($y=0$): $(\log IC_{50}) = 2.8565 / 2.2074 = 1.294$, giving an IC_{50} of $19.7 \mu M$



The same approach can be used to calculate IC_{50} values from the LDHe assay by using the "% of Maximum" values in place of the "% Inhibition" values.

IC_{50} values can also be calculated using the CellTox software available from Aniaara.