

Art no: 05-0106

Lot no: 161701

CERTIFICATE OF ANALYSIS

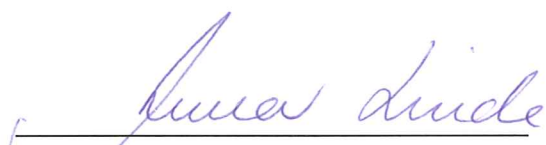


Product name:	Concanavalin A, <i>Canavalia ensiformis</i> (Jack bean) Lectin.
Production date:	2012-03
Date of release:	2012-03-22
Expiry:	2017-03
Form:	Lyophilized

Analysis	Specification	Result
Appearance	White powder or flocculate by visual inspection resulting in a clear solution.	Fulfills requirement
Solubility	Dissolves in PBS buffer pH 7.4 within 5 minutes (1mg/ml).	Fulfills requirement
Assay (%)	> 90 % by A_{280nm} ($\epsilon_{1mg/ml} = 1,14$)	94%, fulfills requirement
Electrophoresis	4 major bands in SDS-electrophoresis, comparable to reference sample.	Fulfills requirement, see appendix 1.
Bacterial burden	Less than 10^2 CFU per 1 g of solid substance.	<8 CFU/g, fulfills requirement

Appendixes:
1. SDS-PAGE

The above material has met all quality specifications and has been reviewed by a quality representative.


Quality Assurance, Anna Linde

2012-11-20

Date

Appendix 1

SDS PAGE analysis Con A lot 161701

Electrophoresis with Pharmacia Phast system (Amersham Biosciences)

Material

Phast gel gradient 8 – 25
Phast gel SDS buffer strips

Method

The proteins were dissolved at 2 mg/ml in loading buffer (10 mM TRIS/HCL, 1 mM EDTA, 2.5 % SDS, 1 % b-mercaptoethanol).

Con A lot 152701 was used as reference.

LMW marker was from, LMW SDS calibration kit for SDS electrophoresis (GE Healthcare).

MW of proteins included in LMW (14 000 Da - -97 000 Da) marker:

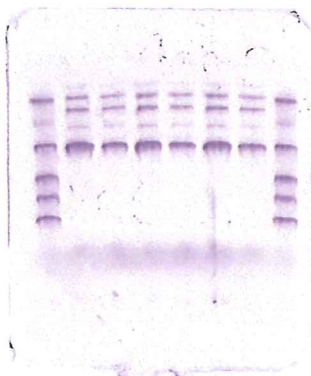
Phosphorylase b	97 000
Albumin	66 000
Ovalbumin	45 000
Carbonic anhydrase	30 000
Trypsin inhibitor	20 100
α -Lactalbumin	14 400

The samples were boiled for 5 min. and approx. 0.5 μ l was applied on Phast gel (gradient 8 – 25).
Program; 300v, 7.5 mA, 2.0 W, 80 Vh.

The gels were stained with Coomassie blue for 30 min and then destained.

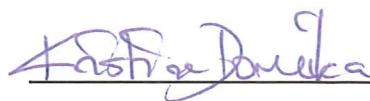
Result

1 2 3 4 5 6 7 8



Lane 1, 8 LMW standard
Lane 3, 5, 7 Lot 161701
Lane 2, 4, 6 Reference Lot: 152701

Analysis performed by



Kristina Domeika 2012-03-06