

Art no: 05-0038

CERTIFICATE OF ANALYSIS

Lot no: 254819



Intertek

Product name:	PHA-P Lectin
Production date:	2019-12
Date of release:	2020-01-31
Stability:	2024-12
Source:	<i>Phaseolus Vulgaris</i> beans (Red Kidney Beans)
Form:	Lyophilized
Storage:	-18 °C (may be shipped at ambient temp)

Analysis	Specification	Result
Appearance	White powder or flocculate by visual inspection resulting in a clear solution.	Fulfills requirement
Solubility	Dissolves in PBS buffer pH 7.4 at 1 mg/ml within 5 minutes.	Fulfills requirement
Assay (%)	> 75 % by OD280nm (ϵ 1mg/ml = 1, 14) in PBS pH 7.4 after filtration through 0.2 μ m acetate membrane.	95,2 %, Fulfills requirement
Electrophoresis	One major band in SDS-electrophoresis, comparable to reference sample.	Fulfills requirement, see appendix 1.
Bacterial burden	Less than 100 CFU per 1 g of solid substance.	Fulfills requirement
Haemagglutination	Agglutinates human blood group 0 at a concentration \leq 8 μ g/ml	7,8 μ g/ml, Fulfills requirement, see appendix 2.

Appendix: 1. SDS-PAGE 2. Haemagglutination
--

The above material has met all quality specifications and has been reviewed by a quality representative.

Quality Assurance, Malin Mattson

2020-01-31

Date



Bilaga 1, tillhör M-00230

SDS PAGE, analysis of PHA-P lot 254819

Electrophoresis with Pharmacia Phastsystem (Amersham Biosciences)

Material

Phast gel gradient 8 – 25
Phast gel SDS buffer strips

Method

The proteins were dissolved to 2 mg/ml 1:1 in PBS and loading buffer (10 mM TRIS/HCL, 1 mM EDTA, 2.5 % SDS, 50 mM DTT).

LMW marker was from LMW SDS calibration kit for SDS electrophoresis (GE Healthcare).

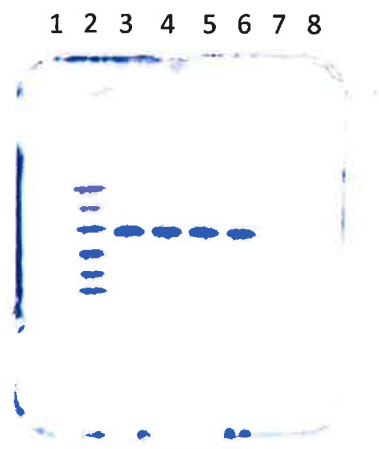
MW of proteins included in LMW (14 000 Da - 97 000 Da) marker:

Phosphorylase b	97 000
Albumin	66 000
Ovalbumin	45 000
Carbonic anhydrase	30 000
Trypsin inhibitor	20 100
α -Lactalbumin	14 400

The samples were heated for 5 min. and approx. 1 μ l was applied on Phast gel (gradient 8 – 25).
Program; 300v, 7.5 mA, 2.0 W, 80 Vh.

The gels were stained with Coomassie blue for 30 min and then destained.

Result



Lane 1 empty
Lane 2 LMW
Lane 3, 4 PHA-P lot 254819
Lane 5, 6 PHA-P lot 231107 (reference)
Lane 7, 8 empty

Analysis performed by

2020-01-20/ME
Maja Ericsson, 2020-01-20



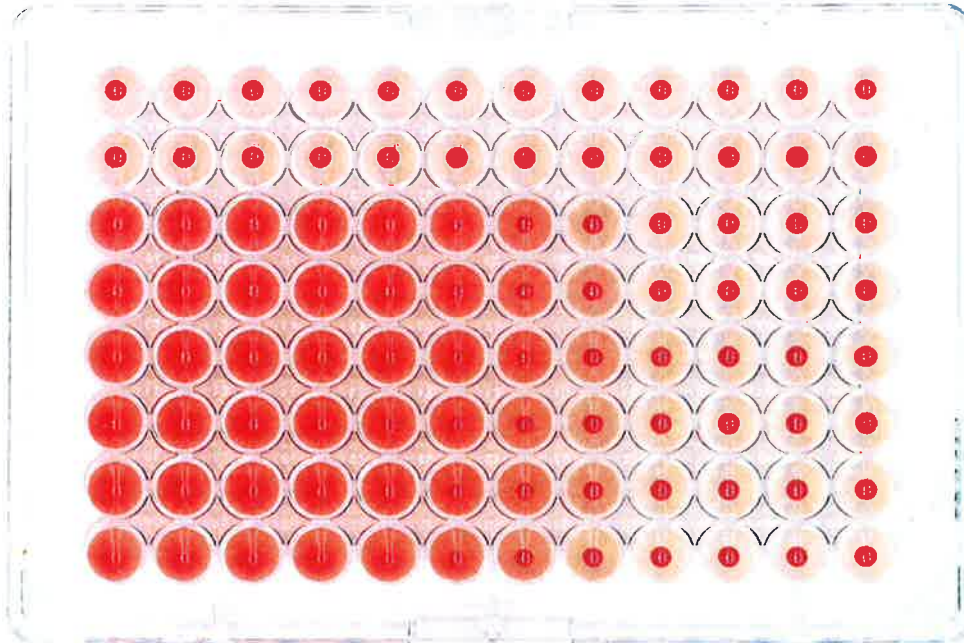
Bilaga 2, tillhör M-00030

Haemagglutination (human blood group 0)

Lectin from Phaseolus vulgaris (red kidney bean),

Phytohemagglutinin (PHA)-P lot 254819, omprov

Column	1	2	3	4	5	6	7	8	9	10	11	12
Titer	0	2	4	8	16	32	64	128	256	512	1024	2048
Conc	500	250	125	63	31	16	7.8	3.9	2.0	1.0	0.5	0.2 µg/ml



Row A,B
Row C-H

Blank
PHA-P lot 254819

Date/Sign:

2020-01-28/ME
2020-01-28/ME