

# BIOPHEN™ FIX

REF 221802-RUO

R1 R2 R3 2 x 2.5 mL; R4 2 x 25 mL

Chromogenic method for the assay of Factor IX  
in plasma or therapeutic concentrates  
**FOR RESEARCH USE ONLY.**

**DO NOT USE IN DIAGNOSTIC PROCEDURES.**

English, last revision: 04-2018

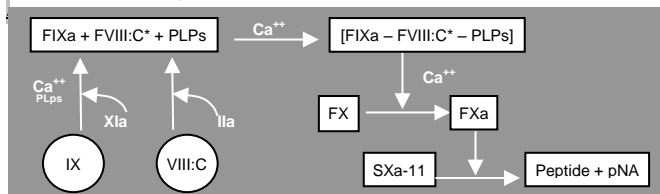
## INTENDED USE:

The BIOPHEN™ FIX kit is a chromogenic method for the *in vitro* quantitative determination of Factor IX activity on citrated human plasma or therapeutic concentrates, based on an automated or manual amidolytic method.

**This kit should be used for research use only and must not be used for patient diagnosis or treatment.**

## PRINCIPLE:

The BIOPHEN™ FIX method involves the chromogenic assay of Factor IX (FIX) activity. In the presence of phospholipids (PLPs) and calcium, Factor XIa (FXIa) activates the FIX present in the test specimen, converting it to activated Factor IX. Factor VIII:C, activated (FVIIIa) by thrombin, forms an enzyme complex with Factor IXa to activate Factor X. The resulting Factor Xa hydrolyzes the chromogenic substrate, leading to the release of paranitroaniline (pNa). The amount of pNa released (measured by absorbance at 405 nm) is directly proportional to the concentration of Factor IX in the specimen (Factor XIa, Factor VIII:C and Factor X are in constant excess amount).



*NB: FVIII:C\*: FVIII:C activated by thrombin.*

## REAGENTS:

**R1 Reagent 1: FX(h)-FVIII:C:** Human Factor X and lyophilized FVIII:C. Contains calcium chloride dihydrate, copper sulfate, a fibrin polymerization inhibitor and stabilizing agents.  
2 x 2.5 mL vials.

**R2 Reagent 2: Activator reagent:** Lyophilized. Contains a constant and optimized amount of human Factor XIa, human thrombin, calcium chloride dihydrate, imidazole, synthetic phospholipids and stabilizing agents.  
2 x 2.5 mL vials.

**R3 Reagent 3: Substrate:** Lyophilized chromogenic substrate specific to Factor Xa (SXa-11). Contains a Factor Xa inhibitor.  
2 x 2.5 mL vials.

**R4 Reagent 4: Buffer:** Tris-BSA reaction buffer. Contains 1% BSA, PEG, Factor VIII:C stabilizing agents and sodium azide (0.9 g/L) as a preservative.  
2 x 25 mL vials.

Reagent R4 contains small amounts of sodium azide (0.9 g/L), see WARNINGS AND PRECAUTIONS.

## WARNINGS AND PRECAUTIONS:

- Biological products must be handled with all necessary precautions and considered as being potentially infectious.
- In contact with lead or copper pipes, sodium azide can generate explosive compounds.
- A yellow color indicates a contaminated substrate. Discard the vial and use a new one.
- Waste should be disposed of in accordance with applicable local regulations.
- Use only the reagents from the same batch of kits. Do not mix reagents from different kit batches when performing an assay; they are optimized for each batch of kits.
- Handle the reagents with care to avoid contamination during use. If possible, avoid reagent evaporation during use by limiting the liquid-air exchange surface. Evaporation reduces the reagent's stability in the analyzer.
- To preserve reagent stability, seal the vials after use with their respective caps.
- Aging studies, conducted over a 3-week period at 30 °C, show that the reagents can be shipped at room temperature over a short period of time, without degradation.
- The human plasma used to prepare Factor X, Factor XIa and thrombin has been tested by recorded methods and is certified free of HIV antibodies, Hbs Antigen and HCV antibodies. The bovine plasma used to prepare the BSA has been tested by recorded methods and is certified free of infectious agents, in particular the causative agent of bovine spongiform encephalitis.
- Create a plasma blank if this latter is icteric, lipaemic, haemolysed, or if its color differs from the standard plasmas.
- When employing the kinetic method, use ΔOD 405 instead of OD 405.
- For *in vitro* use.

**R1** H315: Causes skin irritation.  
H319: Causes serious eye irritation.  
H335: May cause respiratory irritation.  
H412: Harmful to aquatic life with long lasting effects.

**R2** H314: Causes severe skin burns and eye damage.  
H318: Causes serious eye damage.  
H360D: May damage the unborn child.

## REAGENT PREPARATION AND STABILITY:

The reagents are lyophilized under a vacuum in their vials. To avoid any product loss when opening the vial, gently remove the freeze-drying stopper.

### R1 Reagent 1: FX(h)-FVIII:C:

Reconstitute the contents of each vial with **exactly 2.5 mL distilled water**, shake vigorously until fully dissolved. Allow to stabilize for 30 min. at room temperature (18-25°C), shaking occasionally.

Homogenize the reagent prior to use.

Reagent stability after reconstitution, excluding any contamination or evaporation, and stored in the original vial, is of:

- 24 hours at 2-8°C.
- 8 hours at room temperature (18-25°C).
- 2 months frozen at -20°C or less\*

### R2 Reagent 2: Activator reagent:

Reconstitute the contents of each vial with **exactly 2.5 mL distilled water**, shake vigorously until fully dissolved. Allow to stabilize for 30 min. at room temperature (18-25°C), shaking occasionally.

Homogenize the reagent prior to use.

Reagent stability after reconstitution, excluding any contamination or evaporation, and stored in the original vial, is of:

- 24 hours at 2-8°C.
- 8 hours at room temperature (18-25°C).
- 2 months frozen at -20°C or less\*

### R3 Reagent 3: Substrate:

Reconstitute the contents of each vial with **exactly 2.5 mL distilled water**, shake vigorously until fully dissolved. Allow to stabilize for 30 min. at room temperature (18-25°C), shaking occasionally, until fully dissolved. Ensure that there is no deposit at the bottom of the vial.

Homogenize the reagent prior to use.

Reagent stability after reconstitution, excluding any contamination or evaporation, and stored in the original vial, is of:

- 1 month at 2-8°C.
- 7 days at room temperature (18-25°C).
- 2 months frozen at -20°C or less\*

\*Thaw only once, as rapidly as possible at 37°C, adapting the incubation period to the volume of reagent. The stability of the thawed reagent should be checked under laboratory work conditions.

### R4 Reagent 4: Buffer:

Ready to use. Allow to stabilize for 30 minutes at room temperature (18-25°C) before use.

Homogenize thoroughly prior to use.

In its original packaging and stored at 2-8°C, the reagent is stable until the expiry date printed on the kit, excluding contamination or evaporation.

## STORAGE CONDITIONS:

Unopened reagents should be stored at 2-8°C in their original packaging. Under these conditions, they can be used until the expiry date printed on the kit.

## REAGENTS AND MATERIALS REQUIRED BUT NOT PROVIDED:

### Reagents:

- Distilled water.
- 20% acetic acid or 2% citric acid (endpoint method).
- Reference materials for Factor IX assay in therapeutic concentrates (international or internal).
- Specific calibrators and controls with known titration, such as:

Product name	Reference
BIOPHEN™ Plasma Calibrator	222101-RUO
BIOPHEN™ Normal Control Plasma	223201-RUO
BIOPHEN™ Abnormal Control Plasma	223301-RUO

- For low-range calibration, dilute the calibrator in Factor IX deficient plasma (DP050A/K-RUO).

### Materials:

- Spectrophotometer or chromogenic assay analyzer.
- Stopwatch, Calibrated pipettes.

## SPECIMEN COLLECTION AND PREPARATION:

Specimens should be prepared and stored in accordance with applicable local guidelines.

### Specimens:

Human plasma obtained from anticoagulated blood (trisodium citrate).

### Collection:

The blood (9 volumes) should be carefully collected onto the trisodium citrate anticoagulant (1 volume) (0.109 M) by clean venipuncture. Discard the first tube.

### Centrifugation:

Within two hours, use a laboratory-validated method to obtain platelet-poor plasma, for example at least 15 minutes at 2500 g at room temperature (18-25°C) and allow the plasma to settle in a plastic tube.

- Plasma storage<sup>2</sup>:
  - 4 hours at room temperature (18-25°C).
  - 8 months at -20°C.
  - 24 months at -70°C.

Frozen plasma specimens should be thawed rapidly at 37°C, then shaken thoroughly and tested immediately. Resuspend any precipitate by shaking vigorously immediately after thawing and before use.

## PROCEDURE:

The kit can be used for kinetic, automated or manual (endpoint) methods. Perform the test at 37°C and read color intensity at 405 nm.

### Automated method:

Applications for the various analyzers are available on request. See the specific application and specific precautions for each analyzer.

### Assay method:

1. Reconstitute the calibrators and controls as indicated in the specific instructions. For the calibration curve, dilute the calibrators in R4 buffer as described below ("C" defines the concentration of Factor IX):

#### High range (5 to 200%):

When the calibration curve is established using a commercial calibrator plasma (e.g.: BIOPHEN™ Plasma Calibrator), the 1/100 dilution corresponds to the indicated concentration (C) of Factor IX and the 1/50 dilution to twice this concentration. For a calibrator with a titer of C, the 200% level (under assay conditions) is obtained by diluting this calibrator by the following factor:  $50 \times (C)/100$ .

The calibration curve can also be established using a pool of citrated normal plasmas (at least 30 normal individuals, men and women, aged between 18 and 55 years, with no known treatments or diseases), which, by definition, has a Factor IX titer of 100%. The assay includes a 1/100 plasma dilution, which by definition, represents the 100% Factor IX level. The calibration curve ranges from 5 to 200% Factor IX. The 1/50 dilution in R4 buffer represents 200% Factor IX.

Prepare 2 mL of the 1/50 normal plasma pool dilution, or a (50xC/100) dilution of the Factor IX titrated calibrator plasma (i.e. C1). This solution has a Factor IX titer of 200%. Prepare the following calibration curve by serial dilution in R4 buffer, as described in the following table:

Calibrator	C1	C2	C3	C4	C5	0
FIX(%)	200	100	50	25	5	0
Volume of calibrator	1000 µL of C1	500 µL of C1	500 µL of C2	500 µL of C3	100 µL of C4	0 µL
Volume of R4 buffer	0 µL	500 µL	500 µL	500 µL	400 µL	500 µL

The calibration curve can also be established from a Factor IX titrated reference material (international standard or internal standard).

Pre-dilute this material in R4 buffer to obtain a 1 IU/mL solution, then dilute 1/50 in R4 to obtain a solution with a 200% Factor IX titer. Use this solution to establish a calibration curve in R4 buffer as previously explained.

#### Low range (0 to 20%):

Calibration can be performed using a pool of citrated normal plasmas, or a commercial calibrator plasma with a known concentration of Factor IX, i.e. C. Dilute this plasma in Factor IX-deficient plasma (DP050A/K) to achieve a 20% concentration (the dilution factor in deficient plasma is of 5 for the normal pool and of 5xC/100 for a calibrator with a concentration C).

The assay method includes a 1/20 plasma dilution. The calibration curve ranges from 1 to 20% Factor IX. The 1/20 dilution in R4 buffer represents 20% Factor IX.

Using this solution, establish the following calibration curve in R4 buffer:

FIX(%)	20	10	5	2.5	1	0
Volume of 20% FIX Calibrator	500 µL	250 µL	125 µL	65 µL	25 µL	0 µL
Volume of R4 buffer	0 µL	250 µL	375 µL	455 µL	475 µL	500 µL

Prepare the calibration curve immediately before use to avoid any Factor IX degradation.

2. Dilute the specimens in R4 buffer, as described in the table below:

Specimens	Reference	Range		Dilution
		High	Low (after 1/10 pre-dilution in FIX-deficient)	
Control	223201-RUO/ 223301-RUO			1/100
Specimens	N.A.	High		1/100
		Low		1/20

For Factor IX therapeutic concentrates (and biological fluids in which Factor IX is being screened), pre-dilute the test specimen (high range) in R4, aiming for a Factor IX concentration of approximately 1 IU/mL. We recommend performing a pre-dilution, in order to adjust the theoretical Factor IX concentration to between 0.2 and 2 IU/mL, then dilute 1/100 in R4 to perform the test. The expected Factor IX concentration is thus of between 20 and 200%. (the measured concentration should then be multiplied by the "pre-dilution" factor).

Establish the calibration curve and test it with the quality controls. If stored at room temperature (18-25 °C), test the diluted specimens within 2 hours. The exact calibrator and control concentrations for each batch are indicated on the flyer provided with the kit.

3. Dispense the following to the wells of a microplate, or to a plastic tube incubated at 37 °C:

	Microplate	Test tube
Specimens, controls or calibrators diluted in R4	50 µL	200 µL
R1: FX(h)-VIII:C pre-incubated at 37 °C	50 µL	200 µL
Mix and incubate at 37 °C for 2 minutes, then add the following:		
R2: Activator reagent pre-incubated at 37 °C	50 µL	200 µL
Mix and incubate at 37 °C for 3 minutes, then add the following:		
R3: Substrate Sxa-11 pre-incubated at 37 °C	50 µL	200 µL
Mix and incubate at 37 °C for 2 minutes, exactly:		
Stop the reaction by adding the following:		
Citric acid (2%)*	50 µL	200 µL
Mix and measure the optical density at 405 nm against the corresponding blank.		

\*Or acetic acid (20%). The yellow color is stable for 2 hours.

The specimen blank is obtained by mixing the reagents in the reverse order to that of the test: Citric acid (2%), R3, R2, R1, dilute specimen.

Measure the optical density at 405 nm. Subtract the measured blank value from the absorbance measured for the corresponding test.

### Kinetic method:

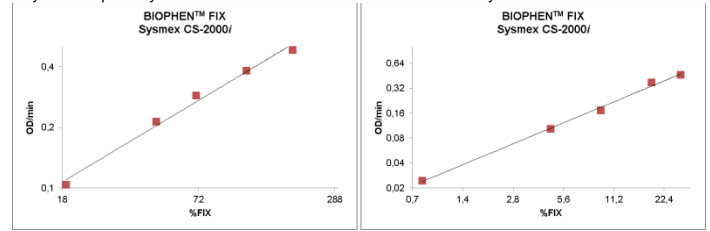
The assay can be performed by the kinetic method by measuring the change in absorbance between 10 and 100 seconds after adding the substrate (i.e. ΔA405). In this case, there is no need to subtract the specimen blank, or to stop the reaction.

If a reaction volume other than that specified above is required for the method used, the ratio of volumes must be strictly observed to guarantee assay performance. The user is responsible for validating any changes and their impact on all results.

## CALIBRATION:

The BIOPHEN™ FIX test can be calibrated for the assay of Factor IX in plasma or therapeutic concentrates. The plasma calibrator covering the dynamic test range is available from HYPHEN BioMed (see the "REAGENTS AND MATERIALS REQUIRED BUT NOT PROVIDED" paragraph) and can be used to establish the calibration curve.

The calibration curves shown below, obtained on a Sysmex CS-2000i analyzer, are given by way of example only. The calibration curve established for the assay series must be used.



## QUALITY CONTROL:

The use of quality controls serves to validate method compliance, along with between-test assay homogeneity for a given batch of reagents.

Include the quality controls with each series, as per good laboratory practice, in order to validate the test. A new calibration curve should be defined, preferably for each test series, and at least for each new reagent batch, or after analyzer maintenance, or when the measured quality control values fall outside the acceptable range for the method.

Each laboratory must define its acceptable ranges and verify the expected performance in its analytical system.

## RESULTS:

- For the manual endpoint method, plot the calibration curve log-log, with the OD 405 nm along the Y-axis and the Factor IX concentration, expressed as a percentage, along the X-axis.
- The concentration of Factor IX in the test specimen is directly inferred from the calibration curve, if the standard dilution is used.
- Results are expressed in % Factor IX.
- If other dilutions are used, the level obtained is the measured level, multiplied by the additional dilution factor used (e.g.: with the manual method, the resulting level is the measured level multiplied by the factor "D" used and divided by: 100, i.e. D/100, for the high range, and 20, i.e. D/20, for the low range).

The results obtained should be used for research use only and must not be used for patient diagnosis or treatment.

## LIMITATIONS:

- To ensure optimum test performance and to meet the specifications, the technical instructions validated by HYPHEN BioMed should be followed carefully. The laboratory is responsible for validating any changes made to these instructions for use.
- Any reagent presenting an unusual appearance or showing signs of contamination must be rejected.
- Any suspicious samples or those showing signs of activation must be rejected.
- Any plasma displaying a coagulum or showing signs of contamination must be rejected.
- No significant effect is observed on Sysmex CS-2000i (high range) for heparin concentrations up to 2 IU/mL, bilirubin concentrations up to 60 mg/dL, hemoglobin concentrations up to 1000 mg/dL and intralipid concentrations up to 1000 mg/dL, by plasma overload tests.

## PERFORMANCE:

- The lower analyzer detection limit is less than 2% in high range and less than 0.5% in low range.
- The measurement domain on the Sysmex CS-2000i is of between 1 and 250% for the high range and between 0.8 and 30% for the low range (and generally of between 5 and 200% for the high range and between 1 and 20% for the low range).
- Performance studies were conducted internally on 1 batch of reagent using a Sysmex CS-2000i. Performance was assessed using laboratory controls over a 20-day period, 2 series per day and duplicates within each series for a control level. The following results were obtained:

Control	High range								Low range			
	Intra-series				Inter-series				Intra-series		Inter-series	
	N	Mean	SD	CV%	n	Mean	SD	CV%	n	Mean	SD	CV%
Normal	30	85.7	1.0	1.2	80	83.1	4.1	4.9	80	8.3	0.5	6.2
Abnormal	30	36.5	0.9	2.4	80	35.7	2.0	5.6	80	3.6	0.2	6.4

## REFERENCES:

- Taran LD. "Factor IX of the blood coagulation system: a review", Biochemistry (Mosc.), 62(7):685-93, 1997.
- Mauge L. and Alhenc-Gelas M. Stabilité pré-analytique des paramètres de la coagulation: revue des données disponibles. Ann Biol Clin. 2014.

## SYMBOLS:

Symbols used and signs listed in the ISO 15223-1 standard, see Symbol definitions document.

Changes compared to the previous version.