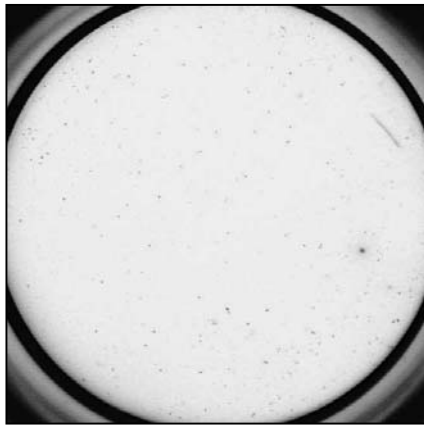


Typical data Human IL-4 ELISPOT kit

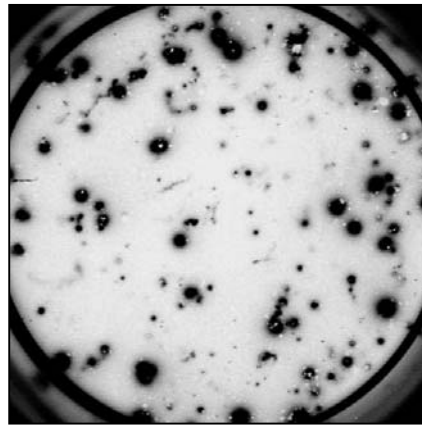
Catalogue no.: CT232-T2 (2-plate format)
CT232-T5 (5-plate format)

Validated for:

Human



Stimulus: none (2×10^4 cells/well)



Stimulus: PMA/ionomycin (2×10^4 cells/well)

Example of IL-4 specific spots produced by human PBMC.
Preincubation: 42h, incubation ELISPOT: 20h.

References list:

- Arif, S., Tree, T.I., Astill, T.P., Tremble, J.M., Dayan, C.M., Roep, B.O. and Peakman, M. 2004. *J. Clin. Invest.* 113: 451-463
- Kloosterboer, F.M., van Luxemburg-Heijs, S.A.P., Willemze, R. and Falkenburg, J.H.F. 2004. *Hum. Immunol.* 65: 328-339
- Martin, S., Wolf-Eichbaum, D., Duinkerken, G., Scherbaum, W., Kolb, H., Noordzij J.G. and Roep, B.O. 2001. *N. Engl. J. Med.* 345: 1036-1040
- Raz, I., Elias, D., Avron, A., Tamir, M., Metzger, M. and Cohen, I.R. 2001. *Lancet* 358: 1749-1753
- Schloot, N.C., Meierhoff, G., Faresjö, M.K., Ott, P., Putnam, A., Lehmann, P., Gottlieb, P., Roep, B.O., Peakman, M., Tree, T. 2003. *J. Autoimmun.* 21: 365-376
- Skowera, A., de Jong, E.C., Schuitemaker, J.H.N., Allen, J.S., Wessely, S.C., Griffiths, G., Kaspenberg, M. and Peakman, M. 2005. *J. Immunol.* 175: 7235-7243
- Vaessen, L.M.B., van Besouw, N.M., Mol, W.M., IJzermans, J.N.M. and Weimar, W. 2006. *Transpl. Immunol.* 15: 281-288
- Zanone, M.M., Favaro, E., Miceli, I., Grassi, G., Camussi, E., Caorsi, C., Amoroso, A., Giovarelli, M., Perin, P.C., and Camussi, G. 2010. *J. Clin. Endocrinol. Metab.* 95: 3788-3797

PROUDLY DISTRIBUTED BY

ANIARA
ANIARA DIAGNOSTICA LLC

+1 (513) 770-1991 | +1 (866) 783-3797
7768 Service Center Drive
West Chester, OH 45069
info@aniara.com