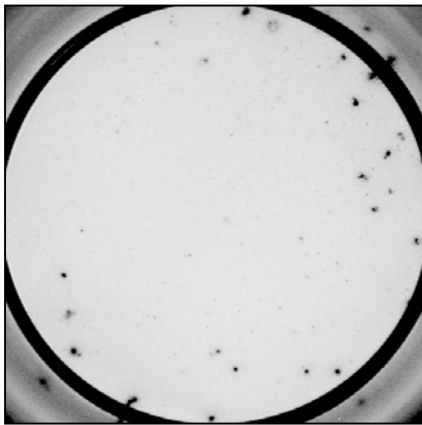


Typical data Human IL-10 ELISPOT kit

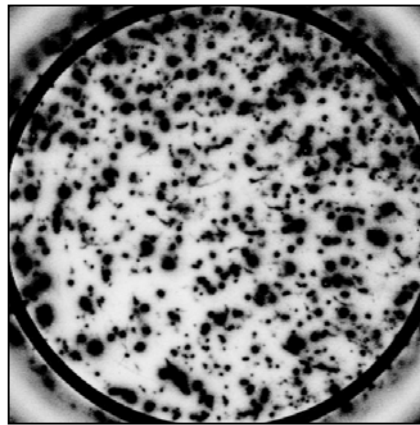
Catalogue no.: CT235-T2 (2-plate format)
CT235-T5 (5-plate format)

Validated for:

Human



Stimulus: none (4×10^5 cells/well)



Stimulus: PMA/ionomycin (5×10^4 cells/well)

Example of IL-10 specific spots produced by human PBMC.
Preincubation: 42h, incubation ELISPOT: 20h.

References list:

- Van Halteren, A.G.S., van Etten, E., de Jong, E.C., Bouillon, R., Roep, B.O. and Mathieu, C. 2002. Diabetes 51: 2119-2125
- Kloosterboer, F.M., van Luxemburg-Heijs, S.A.P., Willemze, R. and Falkenburg, J.H.F. 2004. Hum. Immunol. 65: 328-339
- Martin, S., Wolf-Eichbaum, D., Duinkerken, G., Scherbaum, W., Kolb, H., Noordzij J.G. and Roep, B.O. 2001. N. Engl. J. Med. 345: 1036-1040
- Nell, M.J., Tjabringa, G.S., Wafelman, A.R., Verrijck, R., Hiemstra, P.S., Drijfhout, J.W. and Grote, J.J. 2006. Peptides 27: 649-660
- Pfleger, C., Meierhoff, G., Kolb, H. and Schloot, N.C. 2010. J. Autoimmun. 34: 127-135
- Raz, I., Elias, D., Avron, A., Tamir, M., Metzger, M. and Cohen, I.R. 2001. Lancet 358: 1749-1753
- Sanda, S., Roep, B.O. and von Herrath, M. 2008. Clin. Immunol. 127: 138-143
- Schloot, N.C., Meierhoff, G., Faresjö, M.K., Ott, P., Putnam, A., Lehmann, P., Gottlieb, P., Roep, B.O., Peakman, M. and Tree, T. 2003. J. Autoimmun. 21: 365-376
- Zanone, M.M., Favaro, E., Miceli, I., Grassi, G., Camussi, E., Caorsi, C., Amoroso, A., Giovarelli, M., Perin, P.C., and Camussi, G. 2010. J. Clin. Endocrinol. Metab. 95: 3788-3797

PROUDLY DISTRIBUTED BY

ANIARA
ANIARA DIAGNOSTICA LLC

+1 (513) 770-1991 | +1 (866) 783-3797
7768 Service Center Drive
West Chester, OH 45069
info@aniara.com

Version 110810