

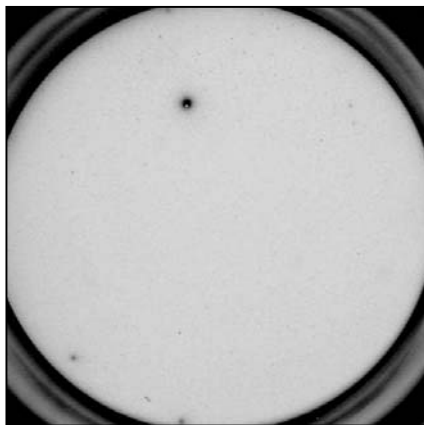
U-CyTech BV
 Yalelaan 48
 3584 CM Utrecht
 The Netherlands
 P +31.30.253 5960
 F +31.30.253 9344
 INFO@ucytech.com
 www.ucytech.com

Typical data Human IL-13 ELISPOT kit

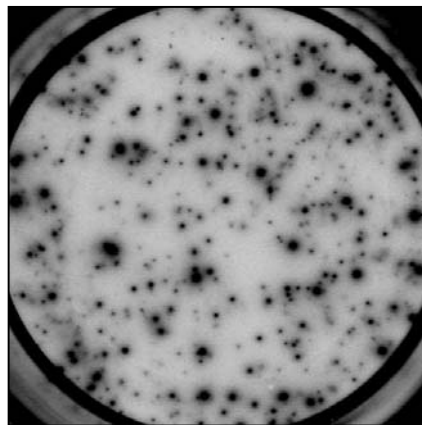
Catalogue no.: CT236-T2 (2-plate format)
 CT236-T5 (5-plate format)

Validated for:

Human



Stimulus: none (2×10^5 cells/well)



Stimulus: PMA/ionomycin (2×10^4 cells/well)

Example of IL-13 specific spots produced by human PBMC.
 Preincubation: 42h, incubation ELISPOT: 5h.

References list:

- Gerrits, J.H., van de Wetering, J., Postma, S., Drabfels, J.J.M., Vaessen, L.M.B., IJzermans, J.N.M., Rischen, J., Claas, F.H.J., Weimar, W. and van Besouw, N.M. 2007. *Nephrol. Dial. Transplant.* 22: 353-261
- Griffioen, M., Borghi, M., Schrier, P.I., Osanto, S. and Schadendorf, D. 2004. *Cancer Immunol. Immunother.* 53: 715-722
- Van Halteren, A.G.S., van Etten, E., de Jong, E.C., Bouillon, R., Roep, B.O. and Mathieu, C. 2002. *Diabetes* 51: 2119-2125
- Martin, S., Wolf-Eichbaum, D., Duinkerken, G., Scherbaum, W., Kolb, H., Noordzij J.G. and Roep, B.O. 2001. *N. Engl. J. Med.* 345: 1036-1040
- Pflieger, C., Meierhoff, G., Kolb, H. and Schloot, N.C. 2010. *J. Autoimmun.* 34: 127-135
- Raz, I., Elias, D., Avron, A., Tamir, M., Metzger, M. and Cohen, I.R. 2001. *Lancet* 358: 1749-1753
- Schloot, N.C., Meierhoff, G., Faresjö, M.K., Ott, P., Putnam, A., Lehmann, P., Gottlieb, P., Roep, B.O., Peakman, M., Tree, T. 2003. *J. Autoimmun.* 21: 365-376
- Skowera, A., de Jong, E.C., Schuitmaker, J.H.N., Allen, J.S., Wessely, S.C., Griffiths, G., Kaspenberg, M. and Peakman, M. 2005. *J. Immunol.* 175: 7235-7243
- Slager, E. H., van der Minne, C.E., Krüse, M., Krueger, D.D., Griffioen, M. and Osanto, S. 2004. *J. Immunol.* 172: 5095-5102

PROUDLY DISTRIBUTED BY

ANIARA
 ANIARA DIAGNOSTICA LLC

+1 (513) 770-1991 | +1 (866) 783-3797
 7768 Service Center Drive
 West Chester, OH 45069
 info@aniara.com

Version 110530