

U-CyTech BV

Yalelaan 48
3584 CM Utrecht
The Netherlands

P +31.30.253 5960

F +31.30.253 9344

INFO@ucytech.com

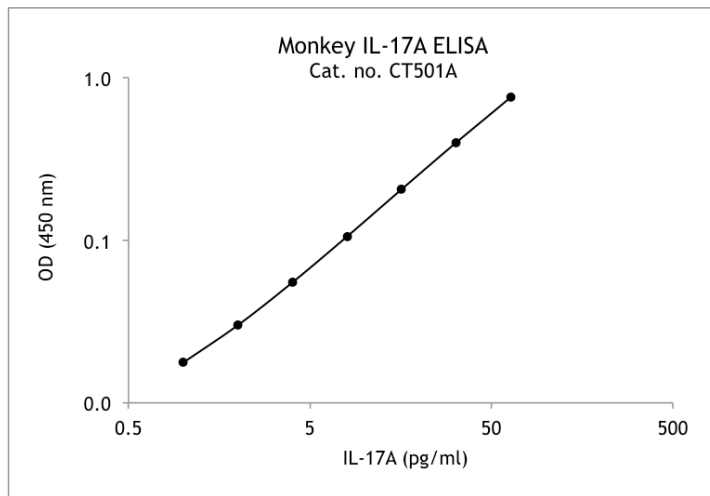
www.ucytech.com

Typical data Monkey IL-17A ELISA kit

Catalogue no.: CT501A (5-plate format)

Validated for:

Rhesus macaque, Cynomolgus monkey and Baboon



Example of a representative Monkey IL-17A standard curve using a 4-parameter logistic fit.

Recommended assay range: 1-64 pg/ml.

Sensitivity: 1 pg/ml.

Calibration: natural rhesus macaque IL-17A.

Type of sample: serum, plasma and culture supernatant.

References list:

Rout, N., Greene, J., Yue, S., O'Conner, D., Johnson P.R., Else, J.G., Exley, M.A. and Kaur, A. 2012. PLoS Pathog. 8: e1002928

Kap, Y.S., van Driel, N., Blezer, E., Parren, P.W.H.I., Bleeker, W.K., Laman, J.D., Craigen, J.L. and 't Hart, B.A. 2010. J. Immunol. 185: 3990-4003

PROUDLY DISTRIBUTED BY

ANIARA
ANIARA DIAGNOSTICA LLC

+1 (513) 770-1991 | +1 (866) 783-3797

7768 Service Center Drive

West Chester, OH 45069

info@aniara.com

Version 140821