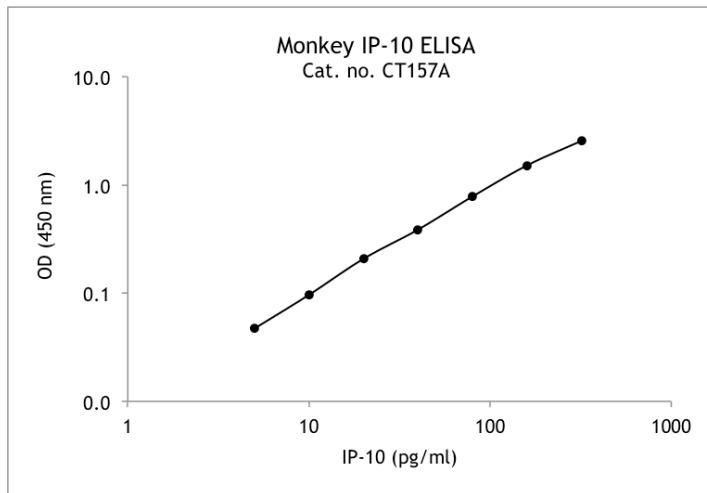


**U-CyTech BV**  
Yalelaan 48  
3584 CM Utrecht  
The Netherlands  
P +31.85.073 1460  
info@ucytech.com  
www.ucytech.com

## Typical data Monkey IP-10 ELISA kit

Catalogue no.: CT157A (5-plate format)

Validated for:  
Rhesus macaque



Example of a representative Monkey IP-10 standard curve using a 4-parameter logistic fit.

Recommended assay range: 5-320 pg/ml.  
Sensitivity: 5 pg/ml.  
Calibration: natural rhesus macaque IP-10.  
Type of sample: serum, plasma and culture supernatant.