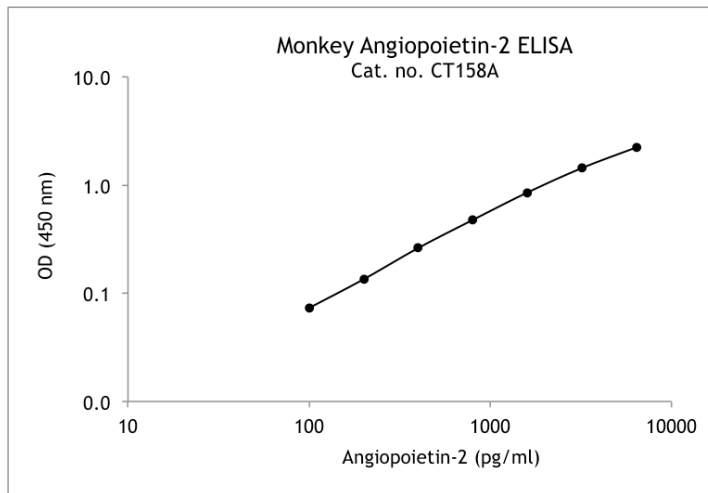


U-CyTech BV
Yalelaan 48
3584 CM Utrecht
The Netherlands
P +31.85.073 1460
info@ucytech.com
www.ucytech.com

Typical data Monkey Angiopoietin-2 ELISA kit

Catalogue no.: CT158A (5-plate format)

Validated for:
Rhesus macaque



Example of a representative Monkey Angiopoietin-2 standard curve using a 4-parameter logistic fit.

Recommended assay range: 100-6400 pg/ml.
Sensitivity: 100 pg/ml.
Calibration: natural rhesus macaque Angiopoietin-2.
Type of sample: serum, plasma and culture supernatant.