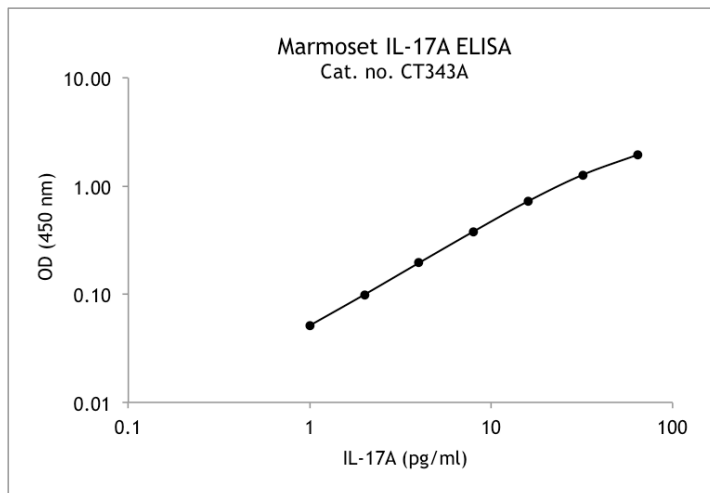


Typical data Marmoset IL-17A ELISA kit

Catalogue no.: CT343A (5-plate format)

Validated for:

Marmoset



Example of a representative Marmoset IL-17A standard curve using a 4-parameter logistic fit.

Recommended assay range: 1-64 pg/ml.

Sensitivity: 1 pg/ml.

Calibration: recombinant marmoset IL-17A.

Type of sample: serum, plasma and culture supernatant.

References list:

Jagessar, A.S., Vierboom, M., Blezer, E.L.A., Bauer, J., 't Hart, B.A. and Kap, Y.S. 2013. Exp. Anim. 62: 159-171