

IN CYTOTOX

SRB SULFORHODAMINE B



APPLICATIONS

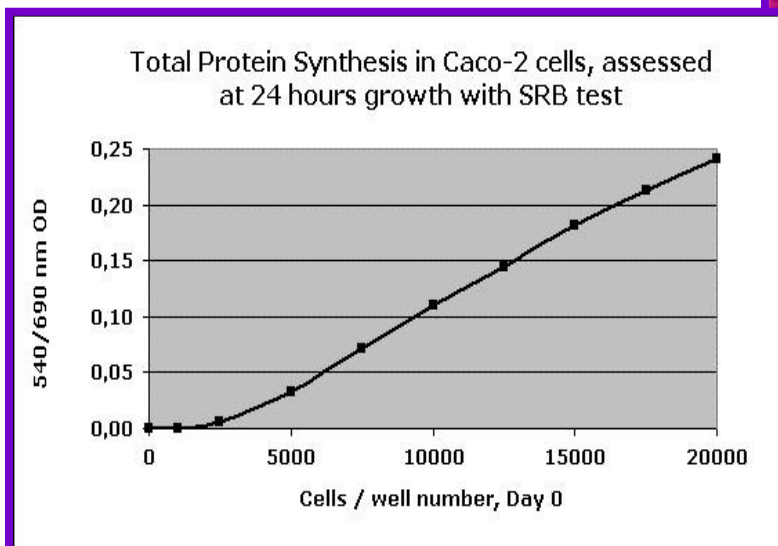
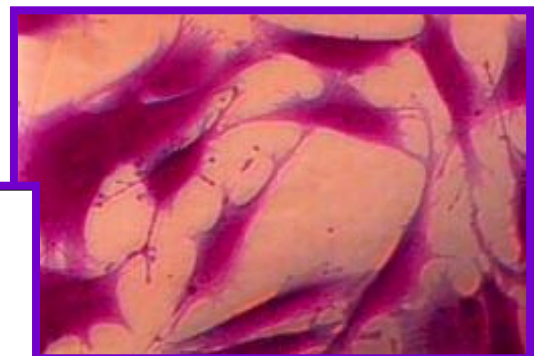
Colorimetric assay for the quantification of the total protein synthesis rate of cells in response to pharmaceutical, chemical and environmental compounds, and nutrients.

PRINCIPLE

Cell proliferation, measured as total protein synthesis, is a very sensitive toxicology marker. Sulforhodamine B (SRB) is an anionic dye that binds to proteins electrostatically. The fixed dye, measured photometrically after solubilization, correlates with total protein synthesis rate and therefore with cell proliferation.

BIOLOGICAL PARAMETERS EVALUATION

- IC₅₀ (Inhibitory Concentration 50%)
- Total protein synthesis
- Cell proliferation



TECHNICAL SPECIFICATIONS

- Absorbance:** - 540 nm
(Recommended reference filter: 690 nm)
- Approximate assay time:** - 2 h 10 min + time to dry the microtiter plate
- Available kit configurations:** - Reagents only
- Reagents and 96-well microplates, sterile reagent reservoirs
- SRB Kit content:** - Wash solution
- Fixing solution
- Labeling solution
- Rinsing solution
- Solubilization solution
- Instruction manual

SRB KIT SIZES AND REFERENCE NUMBERS

REFERENCE NO.	NUMBER OF TESTS
AKSR96.300	300
AKSR96.1200	1200

**Kits with plasticware (microplates and reservoirs) are also available.
Individual reagents and other kit sizes available upon request.**

Version 1.5 01/2007

Distributed by:

ANIARA

Manufactured By: Xenometrix AG