



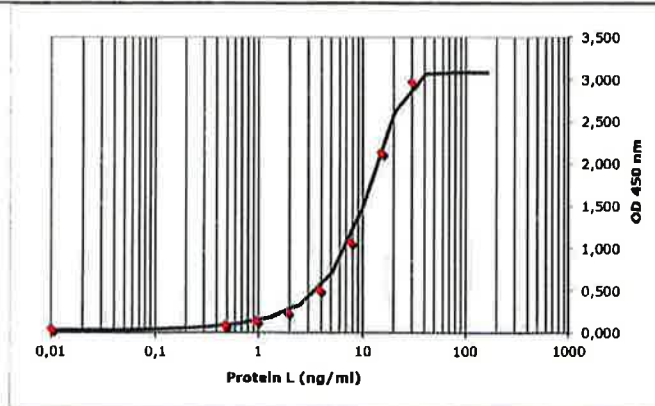
<b>Product name:</b>	<b>Protein L ligand leakage ELISA kit</b>		
<b>Production date:</b>	2022-09		
<b>Date of release:</b>	2022-09-30		
<b>Expiry date:</b>	2023-06		
<b>Store:</b>	+4°C. Protein L reference at -20°C or -80°C.		
<b>Contents:</b>	ELISA kit for detection and quantification of ligand leakage in eluates from Protein L affinity chromatography medium containing immunoglobulin (Ig) or Ig-fragments.		
	<b>Kit contents</b>	<b>Lot</b>	<b>Expiry date</b>
	1 x Anti-Protein L coated microtiter plate	283309	2023-09
	130 µl HRP-conjugated anti-Protein L pAb	283705	2023-09
	1 x 200 µl Protein L reference (600 ng/ml)	281409-01	2024-04
	13 ml EC-Blue Enhanced™	274801-04	2023-06
	7 ml Stop solution, 0.5 M H <sub>2</sub> SO <sub>4</sub>	271623	2026-05
	6 x 5 g PBS Tween tablets	271005-11	2024-03

**Quality Control**

Analysis	Specification	Result
%CV	< 5.0 %	Passed
Absorbance 60 ng/ml	> 2.1	Passed

	OD 450 nm	Concentration
Calibrator 0.47 ng/ml	0.093	0.53
Calibrator 0.94 ng/ml	0.146	1.43
Calibrator 1.88 ng/ml	0.255	1.86
Calibrator 3.75 ng/ml	0.511	3.75
Calibrator 7.5 ng/ml	1.079	7.49
Calibrator 15 ng/ml	2.136	15.00
Calibrator 30 ng/ml	2.968	29.99
Calibrator 60 ng/ml	-	-

Control sample A	0.173	1.04 ng/ml
Control sample B	0.534	3.37 ng/ml
Control sample C	1.426	8.41 ng/ml



The above material has met all quality specifications and has been reviewed by a quality representative

Quality Assurance, Anna Eliasson

2022-09-30  
 Date